

Cytokeratin 20 (KRT20) Rabbit pAb

Catalog No.: A0248

1 Publications

Basic Information

Observed MW

43kDa

Calculated MW

48kDa

Category

Primary antibody

Applications

WB,IF/ICC,ELISA

Cross-Reactivity

Human, Mouse

Background

The protein encoded by this gene is a member of the keratin family. The keratins are intermediate filament proteins responsible for the structural integrity of epithelial cells and are subdivided into cytokeratins and hair keratins. The type I cytokeratins consist of acidic proteins which are arranged in pairs of heterotypic keratin chains. This cytokeratin is a major cellular protein of mature enterocytes and goblet cells and is specifically expressed in the gastric and intestinal mucosa. The type I cytokeratin genes are clustered in a region of chromosome 17q12-q21.

Recommended Dilutions

WB 1:500 - 1:2000**IF/ICC** 1:50 - 1:200

ELISA Recommended starting concentration is 1 µg/mL. Please optimize the concentration based on your specific assay requirements.

Immunogen Information

Gene ID

54474

Swiss Prot

P35900

Immunogen

Recombinant protein (or fragment). This information is considered to be commercially sensitive.

Synonyms

K20; CD20; CK20; CK-20; KRT21; Cytokeratin 20 (KRT20)

Contact

 | 400-999-6126 | cn.market@abclonal.com.cn | www.abclonal.com.cn

Product Information

Source

Rabbit

Isotype

IgG

Purification

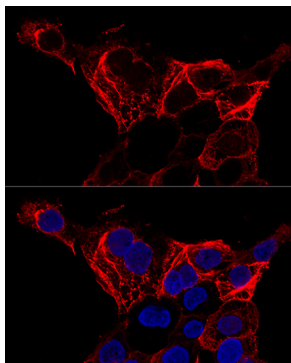
Affinity purification

Storage

Store at -20°C. Avoid freeze / thaw cycles.

Buffer: PBS containing 50% glycerol, preserved with proclin300 or sodium azide (as specified on the Certificate of Analysis), pH 7.3.

Validation Data



Confocal immunofluorescence analysis of A-431 cells using Cytokeratin 20 (KRT20) Rabbit pAb (A0248) at dilution of 1:200. Blue: DAPI for nuclear staining.