

Interferon alpha 1 (IFN- α 1) Rabbit pAb

Catalog No.: A0285

5 Publications

Basic Information

Observed MW

18kDa/22kDa

Calculated MW

22kDa

Category

Primary antibody

Applications

WB, ELISA

Cross-Reactivity

Human

Background

This gene is a member of the alpha interferon gene cluster on chromosome 9. The encoded cytokine is a member of the type I interferon family that is produced in response to viral infection as a key part of the innate immune response with potent antiviral, antiproliferative and immunomodulatory properties. This cytokine, like other type I interferons, binds a plasma membrane receptor made of IFNAR1 and IFNAR2 that is ubiquitously expressed, and thus is able to act on virtually all body cells. This cytokine is upregulated in preeclamptic placentas and is thought to be a mediator of preeclampsia.

Recommended Dilutions

WB 1:500 - 1:1000**ELISA** Recommended starting concentration is 1 μ g/mL. Please optimize the concentration based on your specific assay requirements.

Immunogen Information

Gene ID

3439

Swiss Prot

P01562

Immunogen

Recombinant protein (or fragment). This information is considered to be commercially sensitive.

SynonymsIFL; IFN; IFNA@; IFNA13; IeIF D; IFN-ALPHA; IFN-alphaD; Interferon alpha 1 (IFN- α 1)

Contact

 | 400-999-6126 | cn.market@abclonal.com.cn | www.abclonal.com.cn

Product Information

Source

Rabbit

Isotype

IgG

Purification

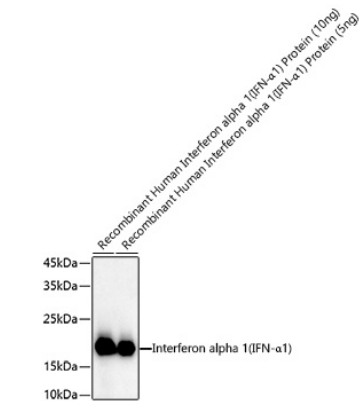
Affinity purification

Storage

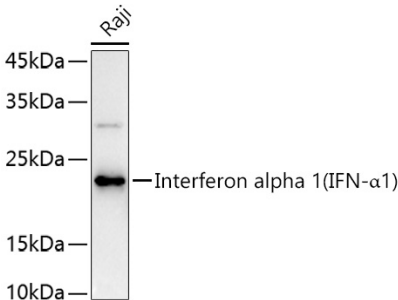
Store at -20°C. Avoid freeze / thaw cycles.

Buffer: PBS containing 50% glycerol, preserved with proclin300 or sodium azide (as specified on the Certificate of Analysis), pH 7.3.

Validation Data



Western blot analysis of Recombinant Human IFN-alpha 1/13(Q114A) Protein (RP00011), using Interferon alpha 1 (IFN- α 1) Rabbit pAb (A0285) at 1:1000 dilution.
Secondary antibody: HRP-conjugated Goat anti-Rabbit IgG (H+L) (AS014) at 1:10000 dilution.
Lysates/proteins: 10ng/5ng per lane.
Blocking buffer: 3% nonfat dry milk in TBST.
Detection: ECL Basic Kit (RM00020).
Exposure time: 30s.



Western blot analysis of lysates from Raji cells, using Interferon alpha 1 (IFN- α 1) Rabbit pAb (A0285) at 1:1000 dilution.
Secondary antibody: HRP-conjugated Goat anti-Rabbit IgG (H+L) (AS014) at 1:10000 dilution.
Lysates/proteins: 25 μ g per lane.
Blocking buffer: 3% nonfat dry milk in TBST.
Detection: ECL Basic Kit (RM00020).
Exposure time: 180s.