

# Alkaline Phosphatase (ALPL) Rabbit mAb

**Catalog No.: A0514** **Recombinant** **10 Publications**

## Basic Information

**Observed MW**

80kDa

**Calculated MW**

57kDa

**Category**

Primary antibody

**Applications**

WB, IHC-P, ELISA

**Cross-Reactivity**

Human, Mouse, Rat

**CloneNo number**

ARC0245

## Background

This gene encodes a member of the alkaline phosphatase family of proteins. There are at least four distinct but related alkaline phosphatases: intestinal, placental, placental-like, and liver/bone/kidney (tissue non-specific). The first three are located together on chromosome 2, while the tissue non-specific form is located on chromosome 1. The product of this gene is a membrane bound glycosylated enzyme that is not expressed in any particular tissue and is, therefore, referred to as the tissue-nonspecific form of the enzyme. Alternative splicing results in multiple transcript variants, at least one of which encodes a preproprotein that is proteolytically processed to generate the mature enzyme. This enzyme may play a role in bone mineralization. Mutations in this gene have been linked to hypophosphatasia, a disorder that is characterized by hypercalcemia and skeletal defects.

## Recommended Dilutions

**WB** 1:5000 - 1:30000**IHC-P** 1:200 - 1:2000

**ELISA** Recommended starting concentration is 1 µg/mL. Please optimize the concentration based on your specific assay requirements.

## Immunogen Information

**Gene ID**

249

**Swiss Prot**

P05186

**Immunogen**

Synthetic peptide. This information is considered to be commercially sensitive.

**Synonyms**

HOPS; HPPA; HPPC; HPPI; HPPO; TNAP; TNALP; APTNAP; TNSALP; AP-TNAP; TNS-ALP; Alkaline Phosphatase (ALPL)

## Contact

 | 400-999-6126 | [cn.market@abclonal.com.cn](mailto:cn.market@abclonal.com.cn) | [www.abclonal.com.cn](http://www.abclonal.com.cn)

## Product Information

**Source**

Rabbit

**Isotype**

IgG

**Purification**

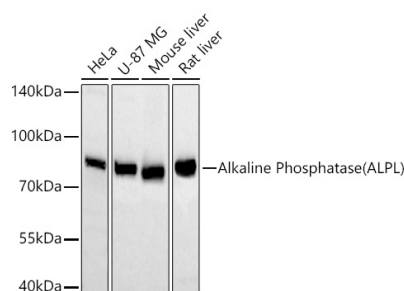
Affinity purification

**Storage**

Store at -20°C. Avoid freeze / thaw cycles.

Buffer: PBS with 0.02% sodium azide, 0.05% BSA, 50% glycerol, pH7.3.

## Validation Data



Western blot analysis of various lysates using Alkaline Phosphatase (ALPL) Rabbit mAb (A0514) at 1:5000 dilution incubated overnight at 4°C.

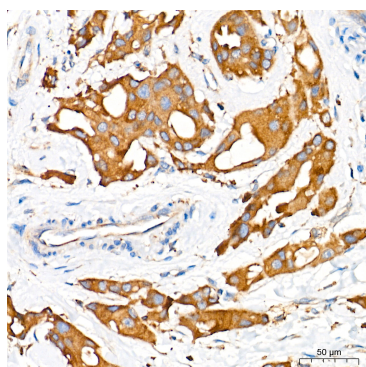
Secondary antibody: HRP-conjugated Goat anti-Rabbit IgG (H+L) (AS014) at 1:10000 dilution.

Lysates/proteins: 25 µg per lane.

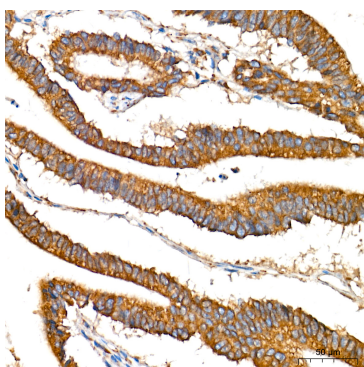
Blocking buffer: 3% nonfat dry milk in TBST.

Detection: ECL Basic Kit (RM00020).

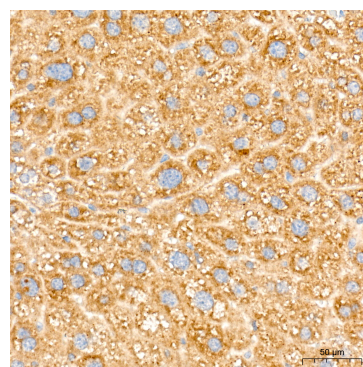
Exposure time: 10s.



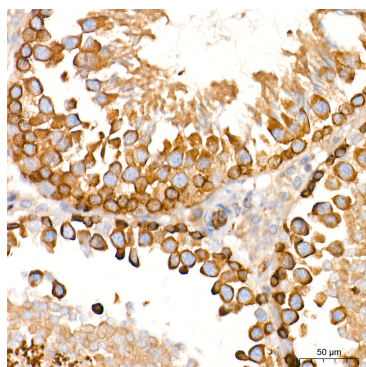
Immunohistochemistry analysis of paraffin-embedded Human breast cancer tissue using Alkaline Phosphatase (ALPL) Rabbit mAb (A0514) at a dilution of 1:1000 (40x lens). High pressure antigen retrieval performed with 0.01M Tris-EDTA Buffer (pH 9.0) prior to IHC staining.



Immunohistochemistry analysis of paraffin-embedded Human colon carcinoma tissue using Alkaline Phosphatase (ALPL) Rabbit mAb (A0514) at a dilution of 1:1000 (40x lens). High pressure antigen retrieval performed with 0.01M Tris-EDTA Buffer (pH 9.0) prior to IHC staining.



Immunohistochemistry analysis of paraffin-embedded Mouse liver tissue using Alkaline Phosphatase (ALPL) Rabbit mAb (A0514) at a dilution of 1:1000 (40x lens). High pressure antigen retrieval performed with 0.01M Tris-EDTA Buffer (pH 9.0) prior to IHC staining.



Immunohistochemistry analysis of paraffin-embedded Mouse testis tissue using Alkaline Phosphatase (ALPL) Rabbit mAb (A0514) at a dilution of 1:1000 (40x lens). High pressure antigen retrieval performed with 0.01M Tris-EDTA Buffer (pH 9.0) prior to IHC staining.