

TFE3 Rabbit mAb

Catalog No.: A0548

Recombinant

3 Publications

Basic Information

Observed MW

70kDa

Calculated MW

62kDa

Category

Primary antibody

Applications

WB,IHC-P,ELISA

Cross-Reactivity

Human, Mouse, Rat

CloneNo number

ARC1829

Background

This gene encodes a basic helix-loop-helix domain-containing transcription factor that binds MUE3-type E-box sequences in the promoter of genes. The encoded protein promotes the expression of genes downstream of transforming growth factor beta (TGF-beta) signaling. This gene may be involved in chromosomal translocations in renal cell carcinomas and other cancers, resulting in the production of fusion proteins. Translocation partners include PRCC (papillary renal cell carcinoma), NONO (non-POU domain containing, octamer-binding), and ASPSCR1 (alveolar soft part sarcoma chromosome region, candidate 1), among other genes. Alternative splicing results in multiple transcript variants.

Recommended Dilutions

WB 1:1000 - 1:4000**IHC-P** 1:100 - 1:400

ELISA Recommended starting concentration is 1 µg/mL. Please optimize the concentration based on your specific assay requirements.

Immunogen Information

Gene ID

7030

Swiss Prot

P19532

Immunogen

Recombinant protein (or fragment). This information is considered to be commercially sensitive.

Synonyms

TFEA; RCCP2; RCCX1; MRXSPF; bHLHe33; TFE3

Contact

 | 400-999-6126 | cn.market@abclonal.com.cn | www.abclonal.com.cn

Product Information

Source

Rabbit

Isotype

IgG

Purification

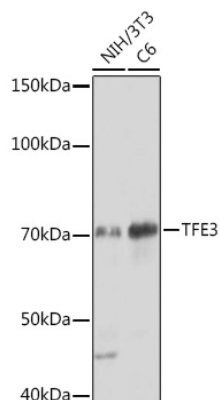
Affinity purification

Storage

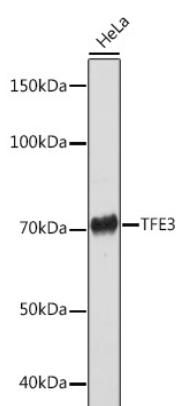
Store at -20°C. Avoid freeze / thaw cycles.

Buffer: PBS with 0.02% sodium azide, 0.05% BSA, 50% glycerol, pH7.3.

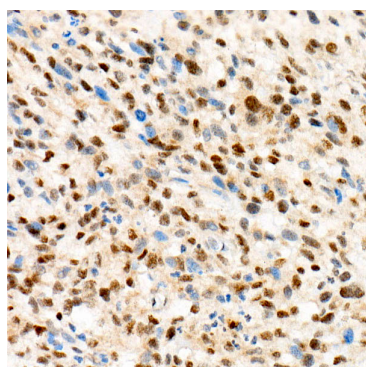
Validation Data



Western blot analysis of various lysates using TFE3 Rabbit mAb (A0548) at 1:1000 dilution.
Secondary antibody: HRP-conjugated Goat anti-Rabbit IgG (H+L) (AS014) at 1:10000 dilution.
Lysates/proteins: 25µg per lane.
Blocking buffer: 3% nonfat dry milk in TBST.
Detection: ECL Basic Kit (RM00020).
Exposure time: 30s.



Western blot analysis of lysates from HeLa cells, using TFE3 Rabbit mAb (A0548) at 1:1000 dilution.
Secondary antibody: HRP-conjugated Goat anti-Rabbit IgG (H+L) (AS014) at 1:10000 dilution.
Lysates/proteins: 25µg per lane.
Blocking buffer: 3% nonfat dry milk in TBST.
Detection: ECL Basic Kit (RM00020).
Exposure time: 90s.



Immunohistochemistry analysis of paraffin-embedded Human acinar soft tissue sarcoma using TFE3 Rabbit mAb (A0548) at dilution of 1:100 (40x lens). High pressure antigen retrieval performed with 0.01M Tris/EDTA Buffer (pH 9.0) prior to IHC staining.