

# [KD Validated] NF2 Rabbit pAb

**Catalog No.: A0739**

## Basic Information

**Observed MW**

73kDa

**Calculated MW**

70kDa

**Category**

Primary antibody

**Applications**

WB, IF/ICC, IP, ELISA

**Cross-Reactivity**

Human, Mouse, Rat

## Background

This gene encodes a protein that is similar to some members of the ERM (ezrin, radixin, moesin) family of proteins that link cytoskeletal components with proteins in the cell membrane. The encoded protein is involved in regulation of contact-dependent inhibition of cell proliferation and functions in cell-cell adhesion and transmembrane signaling. The encoded protein has been shown to interact with cell-surface proteins, proteins involved in cytoskeletal dynamics, and proteins involved in regulating ion transport. Disruption of this protein's function has been implicated in tumorigenesis and metastasis. Mutations in this gene are associated with neurofibromatosis type II which is characterized by nervous system and skin tumors and ocular abnormalities.

## Recommended Dilutions

**WB** 1:500 - 1:2000**IF/ICC** 1:50 - 1:200**IP** 0.5µg-4µg antibody for  
200µg-400µg extracts of  
whole cells**ELISA** Recommended starting  
concentration is 1 µg/mL.  
Please optimize the  
concentration based on  
your specific assay  
requirements.

## Contact

 | 400-999-6126 | [cn.market@abclonal.com.cn](mailto:cn.market@abclonal.com.cn) | [www.abclonal.com.cn](http://www.abclonal.com.cn)

## Immunogen Information

**Gene ID**

4771

**Swiss Prot**

P35240

**Immunogen**

Recombinant protein (or fragment). This information is considered to be commercially sensitive.

**Synonyms**

ACN; SCH; BANF; merlin-1; F2

## Product Information

**Source**

Rabbit

**Isotype**

IgG

**Purification**

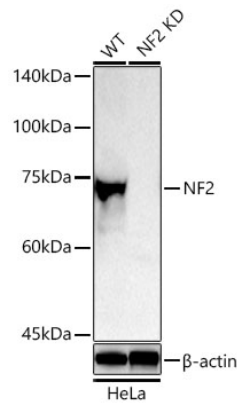
Affinity purification

**Storage**

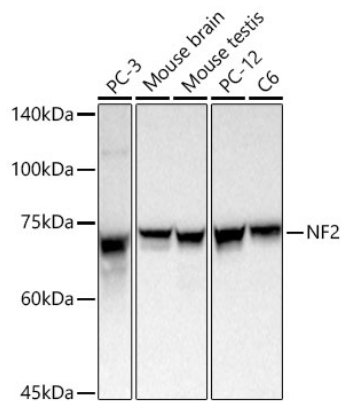
Store at -20°C. Avoid freeze / thaw cycles.

Buffer: PBS containing 50% glycerol, preserved with proclin300 or sodium azide (as specified on the Certificate of Analysis), pH 7.3.

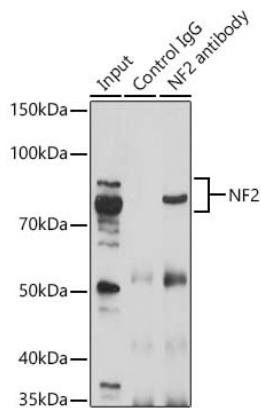
Validation Data



Western blot analysis of lysates from wild type (WT) and NF2 knockdown (KD) HeLa cells using [KD Validated] NF2 Rabbit pAb (A0739) at 1:1000 dilution incubated overnight at 4°C.  
Secondary antibody: HRP-conjugated Goat anti-Rabbit IgG (H+L) (AS014) at 1:10000 dilution.  
Lysates/proteins: 25 µg per lane.  
Blocking buffer: 3% nonfat dry milk in TBST.  
Detection: ECL Basic Kit (RM00020)  
Exposure time: 180 s.

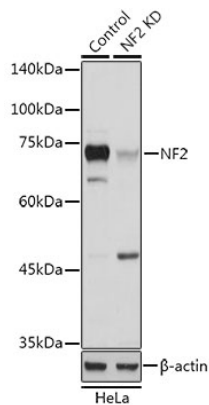


Western blot analysis of various lysates using [KD Validated] NF2 Rabbit pAb (A0739) at 1:1000 dilution incubated overnight at 4°C.  
Secondary antibody: HRP-conjugated Goat anti-Rabbit IgG (H+L) (AS014) at 1:10000 dilution.  
Lysates/proteins: 25 µg per lane.  
Blocking buffer: 3% nonfat dry milk in TBST.  
Detection: ECL Basic Kit (RM00020)  
Exposure time: 30 s.

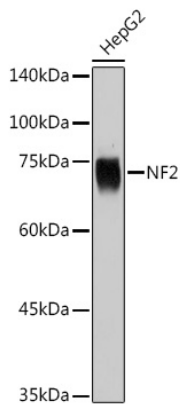


Immunoprecipitation analysis of 200 µg extracts of A-549 cells using 3 µg [KD Validated] NF2 Rabbit pAb (A0739). Western blot was performed from the immunoprecipitate using [KO Validated] NF2 Rabbit pAb (A0739) at a dilution of 1:1000.

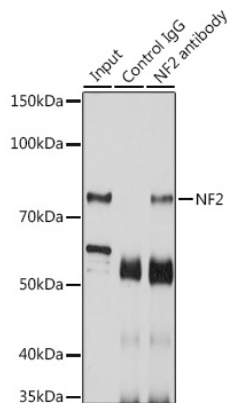
Validation Data



Western blot analysis of lysates from wild type (WT) and NF2 knockdown (KD) HeLa cells, using [KD Validated] NF2 Rabbit pAb (A0739) at 1:1000 dilution.  
Secondary antibody: HRP-conjugated Goat anti-Rabbit IgG (H+L) (AS014) at 1:10000 dilution.  
Lysates/proteins: 25µg per lane.  
Blocking buffer: 3% nonfat dry milk in TBST.  
Detection: ECL Basic Kit (RM00020).  
Exposure time: 3s.



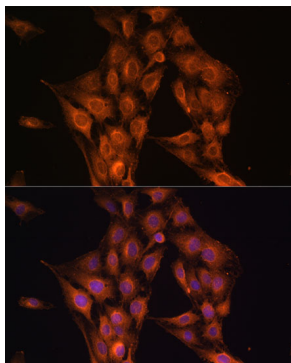
Western blot analysis of lysates from HepG2 cells, using [KD Validated] NF2 Rabbit pAb (A0739) at 1:1000 dilution.  
Secondary antibody: HRP-conjugated Goat anti-Rabbit IgG (H+L) (AS014) at 1:10000 dilution.  
Lysates/proteins: 25µg per lane.  
Blocking buffer: 3% nonfat dry milk in TBST.  
Detection: ECL Basic Kit (RM00020).  
Exposure time: 3s.



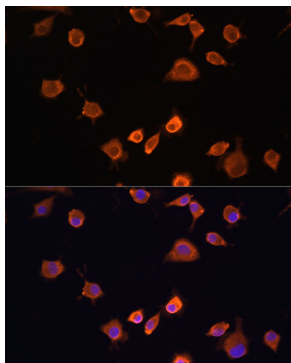
Immunoprecipitation analysis of 200 µg extracts of SKOV3 cells using 3 µg [KD Validated] NF2 Rabbit pAb (A0739). Western blot was performed from the immunoprecipitate using NF2 antibody (A0739) at a dilution of 1:1000.

## Validation Data

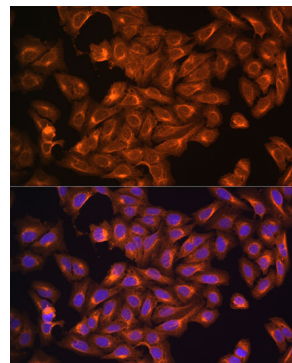
---



Immunofluorescence analysis of C6 cells using [KD Validated] NF2 Rabbit pAb (A0739) at dilution of 1:100. Blue: DAPI for nuclear staining.



Immunofluorescence analysis of L929 cells using [KD Validated] NF2 Rabbit pAb (A0739) at dilution of 1:100. Blue: DAPI for nuclear staining.



Immunofluorescence analysis of U2OS cells using [KD Validated] NF2 Rabbit pAb (A0739) at dilution of 1:100. Blue: DAPI for nuclear staining.