

NR2F2 Rabbit pAb

Catalog No.: A10251 **4 Publications**

Basic Information

Observed MW

47kDa

Calculated MW

46kDa

Category

Primary antibody

Applications

WB, IHC-P, IF/ICC, ELISA

Cross-Reactivity

Human, Mouse, Rat

Background

This gene encodes a member of the steroid thyroid hormone superfamily of nuclear receptors. The encoded protein is a ligand inducible transcription factor that is involved in the regulation of many different genes. Alternate splicing results in multiple transcript variants.

Recommended Dilutions

WB	1:500 - 1:1000
IHC-P	1:50 - 1:200
IF/ICC	1:50 - 1:200
ELISA	Recommended starting concentration is 1 µg/mL. Please optimize the concentration based on your specific assay requirements.

Contact

☎	400-999-6126
✉	cn.market@abclonal.com.cn
🌐	www.abclonal.com.cn

Immunogen Information

Gene ID

7026

Swiss Prot

P24468

Immunogen

Synthetic peptide. This information is considered to be commercially sensitive.

Synonyms

ARP1; ARP-1; CHTD4; NF-E3; SRXX5; SVP40; COUPTF2; COUPTFB; TFCOUP2; COUPTFII; NR2F2

Product Information

Source

Rabbit

Isotype

IgG

Purification

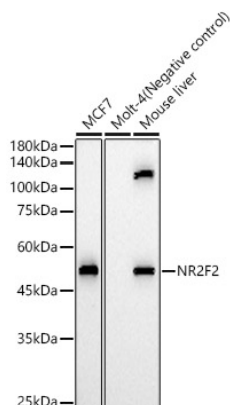
Affinity purification

Storage

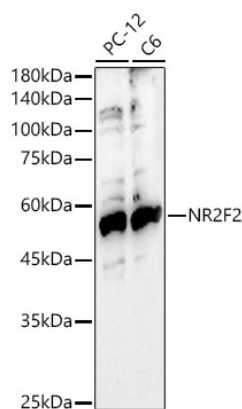
Store at -20°C. Avoid freeze / thaw cycles.

Buffer: PBS containing 50% glycerol, preserved with proclin300 or sodium azide (as specified on the Certificate of Analysis), pH 7.3.

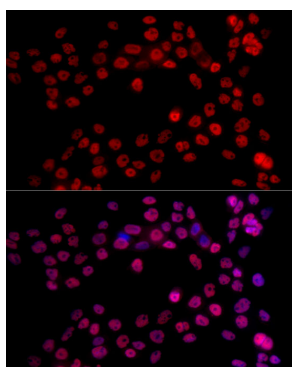
Validation Data



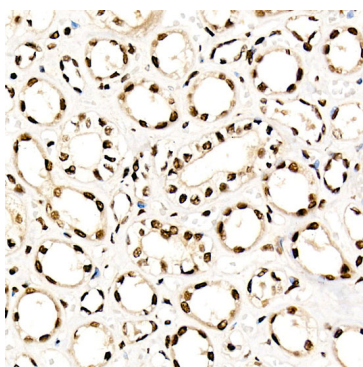
Western blot analysis of various lysates, using NR2F2 Rabbit pAb (A10251) at 1:700 dilution. Secondary antibody: HRP-conjugated Goat anti-Rabbit IgG (H+L) (AS014) at 1:10000 dilution. Lysates/proteins: 25µg per lane. Blocking buffer: 3% nonfat dry milk in TBST. Detection: ECL Basic Kit (RM00020). Exposure time: 180s.



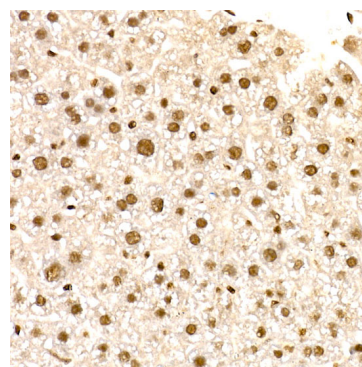
Western blot analysis of various lysates, using NR2F2 Rabbit pAb (A10251) at 1:700 dilution. Secondary antibody: HRP-conjugated Goat anti-Rabbit IgG (H+L) (AS014) at 1:10000 dilution. Lysates/proteins: 25µg per lane. Blocking buffer: 3% nonfat dry milk in TBST. Detection: ECL Basic Kit (RM00020). Exposure time: 90s.



Immunofluorescence analysis of A431 cells using NR2F2 Rabbit pAb (A10251) at dilution of 1:50 (40x lens). Secondary antibody: Cy3-conjugated Goat anti-Rabbit IgG (H+L) (AS007) at 1:500 dilution. Blue: DAPI for nuclear staining.

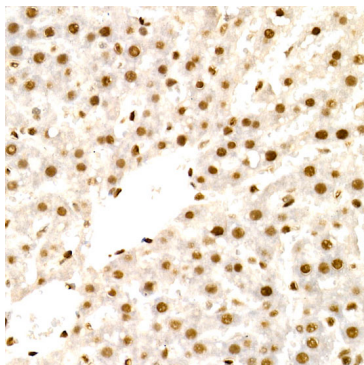


Immunohistochemistry analysis of paraffin-embedded Human kidney using NR2F2 Rabbit pAb (A10251) at dilution of 1:50 (40x lens). High pressure antigen retrieval performed with 0.01M Citrate buffer (pH 6.0) prior to IHC staining.



Immunohistochemistry analysis of paraffin-embedded Mouse liver using NR2F2 Rabbit pAb (A10251) at dilution of 1:50 (40x lens). High pressure antigen retrieval performed with 0.01M Citrate buffer (pH 6.0) prior to IHC staining.

Validation Data



Immunohistochemistry analysis of paraffin-embedded Rat liver using NR2F2 Rabbit pAb (A10251) at dilution of 1:50 (40x lens). High pressure antigen retrieval performed with 0.01M Citrate buffer (pH 6.0) prior to IHC staining.