

LRIG1 Rabbit pAb

Catalog No.: A10297

Basic Information

Observed MW

160kDa

Calculated MW

119kDa

Category

Primary antibody

Applications

WB, ELISA

Cross-Reactivity

Human, Mouse

Background

Predicted to act upstream of or within several processes, including innervation; otolith morphogenesis; and sensory perception of sound. Predicted to be located in plasma membrane. Predicted to be active in extracellular matrix and extracellular space.

Recommended Dilutions

WB 1:1000 - 1:2000

ELISA Recommended starting concentration is 1 µg/mL. Please optimize the concentration based on your specific assay requirements.

Immunogen Information

Gene ID

26018

Swiss Prot

Q96JA1

Immunogen

Recombinant protein (or fragment). This information is considered to be commercially sensitive.

Synonyms

LIG1; LIG-1; LRIG1

Contact

 | 400-999-6126

 | cn.market@abclonal.com.cn

 | www.abclonal.com.cn

Product Information

Source

Rabbit

Isotype

IgG

Purification

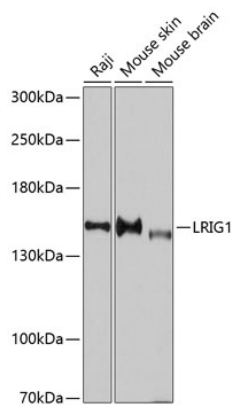
Affinity purification

Storage

Store at -20°C. Avoid freeze / thaw cycles.

Buffer: PBS with 0.09% Sodium azide, 50% glycerol, pH 7.3.

Validation Data



Western blot analysis of various lysates using LRIG1 Rabbit pAb (A10297) at 1:3000 dilution.
Secondary antibody: HRP-conjugated Goat anti-Rabbit IgG (H+L) (AS014) at 1:10000 dilution.
Lysates/proteins: 25µg per lane.
Blocking buffer: 3% nonfat dry milk in TBST.
Detection: ECL Enhanced Kit (RM00021).
Exposure time: 90s.