

LAPTM4B Rabbit pAb

Catalog No.: A10761 **3 Publications**

Basic Information

Observed MW

37kDa

Calculated MW

35kDa

Category

Primary antibody

Applications

WB, ELISA

Cross-Reactivity

Human, Mouse, Rat

Background

Enables ceramide binding activity; enzyme binding activity; and phosphatidylinositol biphosphate binding activity. Involved in several processes, including negative regulation of macromolecule metabolic process; regulation of lysosomal membrane permeability; and regulation of lysosome organization. Located in several cellular components, including endosome; lysosomal membrane; and plasma membrane.

Recommended Dilutions

WB 1:500 - 1:2000

ELISA Recommended starting concentration is 1 µg/mL. Please optimize the concentration based on your specific assay requirements.

Immunogen Information

Gene ID

55353

Swiss Prot

Q86VI4

Immunogen

Recombinant protein (or fragment). This information is considered to be commercially sensitive.

Synonyms

LC27; LAPTM4beta; LAPTM4B

Contact

 | 400-999-6126

 | cn.market@abclonal.com.cn

 | www.abclonal.com.cn

Product Information

Source

Rabbit

Isotype

IgG

Purification

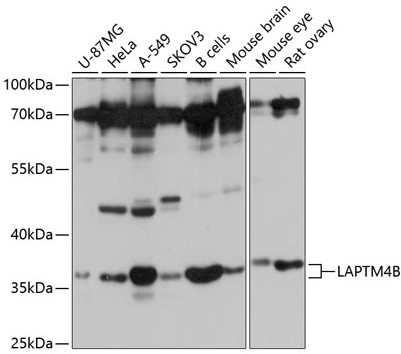
Affinity purification

Storage

Store at -20°C. Avoid freeze / thaw cycles.

Buffer: PBS with 0.01% thimerosal, 50% glycerol, pH 7.3.

Validation Data



Western blot analysis of various lysates using LAPTMB Rabbit pAb (A10761) at 1:1000 dilution.
Secondary antibody: HRP-conjugated Goat anti-Rabbit IgG (H+L) (AS014) at 1:10000 dilution.
Lysates/proteins: 25µg per lane.
Blocking buffer: 3% nonfat dry milk in TBST.
Detection: ECL Basic Kit (RM00020).
Exposure time: 10s.