

GOT1 Rabbit mAb

Catalog No.: A11363

Recombinant

1 Publications

Basic Information

Observed MW

41kDa

Calculated MW

46kDa

Category

Primary antibody

Applications

WB, IF/ICC, ELISA

Cross-Reactivity

Human, Mouse, Rat

CloneNo number

ARC0579

Background

Glutamic-oxaloacetic transaminase is a pyridoxal phosphate-dependent enzyme which exists in cytoplasmic and mitochondrial forms, GOT1 and GOT2, respectively. GOT plays a role in amino acid metabolism and the urea and tricarboxylic acid cycles. The two enzymes are homodimeric and show close homology.

Recommended Dilutions

WB 1:1000 - 1:6000

IF/ICC 1:50 - 1:200

ELISA Recommended starting concentration is 1 µg/mL. Please optimize the concentration based on your specific assay requirements.

Immunogen Information

Gene ID

2805

Swiss Prot

P17174

Immunogen

Synthetic peptide. This information is considered to be commercially sensitive.

Synonyms

AST; AST1; SGOT; cCAT; GIG18; cAspAT; ASTQTL1; GOT1

Contact

☎ | 400-999-6126

✉ | cn.market@abclonal.com.cn

🌐 | www.abclonal.com.cn

Product Information

Source

Rabbit

Isotype

IgG

Purification

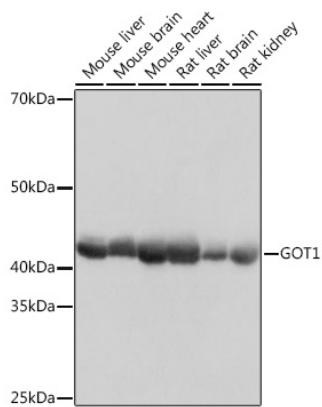
Affinity purification

Storage

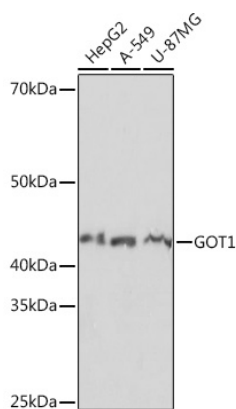
Store at -20°C. Avoid freeze / thaw cycles.

Buffer: PBS with 0.02% sodium azide, 0.05% BSA, 50% glycerol, pH7.3.

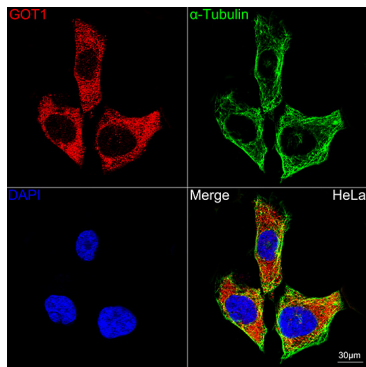
Validation Data



Western blot analysis of various lysates using GOT1 Rabbit mAb (A11363) at 1:1000 dilution.
Secondary antibody: HRP-conjugated Goat anti-Rabbit IgG (H+L) (AS014) at 1:10000 dilution.
Lysates/proteins: 25µg per lane.
Blocking buffer: 3% nonfat dry milk in TBST.
Detection: ECL Basic Kit (RM00020).
Exposure time: 1s.



Western blot analysis of various lysates using GOT1 Rabbit mAb (A11363) at 1:1000 dilution.
Secondary antibody: HRP-conjugated Goat anti-Rabbit IgG (H+L) (AS014) at 1:10000 dilution.
Lysates/proteins: 25µg per lane.
Blocking buffer: 3% nonfat dry milk in TBST.
Detection: ECL Basic Kit (RM00020).
Exposure time: 1s.



Confocal imaging of HeLa cells using GOT1 Rabbit mAb (A11363,dilution 1:100)(Red).
The cells were counterstained with α-Tubulin Mouse mAb (AC012,dilution 1:400) (Green).
DAPI was used for nuclear staining (blue).
Objective: 60x.