

ENO2 Rabbit pAb

Catalog No.: A12341 **5 Publications**

Basic Information

Observed MW

47kDa

Calculated MW

47kDa

Category

Primary antibody

Applications

WB, IF/ICC, IP, ELISA

Cross-Reactivity

Human, Mouse, Rat

Background

This gene encodes one of the three enolase isoenzymes found in mammals. This isoenzyme, a homodimer, is found in mature neurons and cells of neuronal origin. A switch from alpha enolase to gamma enolase occurs in neural tissue during development in rats and primates.

Recommended Dilutions

WB 1:500 - 1:1000

IF/ICC 1:50 - 1:200

IP 0.5µg-4µg antibody for
400µg-600µg extracts of
whole cells

ELISA Recommended starting
concentration is 1 µg/mL.
Please optimize the
concentration based on
your specific assay
requirements.

Immunogen Information

Gene ID

2026

Swiss Prot

P09104

Immunogen

Recombinant protein (or fragment). This information is considered to be commercially sensitive.

Synonyms

NSE; HEL-S-279; ENO2

Contact

☎ | 400-999-6126

✉ | cn.market@abclonal.com.cn

🌐 | www.abclonal.com.cn

Product Information

Source

Rabbit

Isotype

IgG

Purification

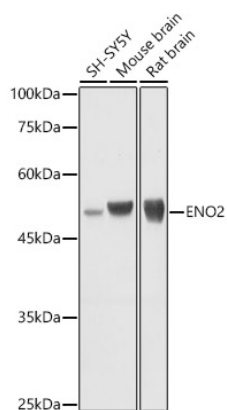
Affinity purification

Storage

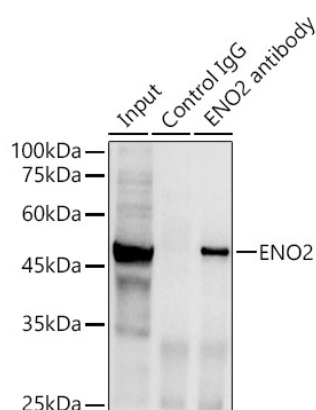
Store at -20°C. Avoid freeze / thaw cycles.

Buffer: PBS containing 50% glycerol, preserved with proclin300 or sodium azide (as specified on the Certificate of Analysis), pH 7.3.

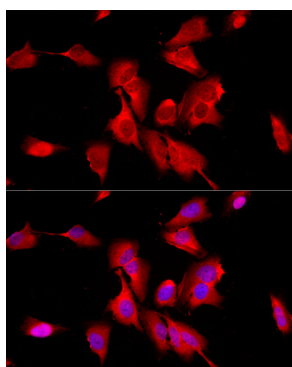
Validation Data



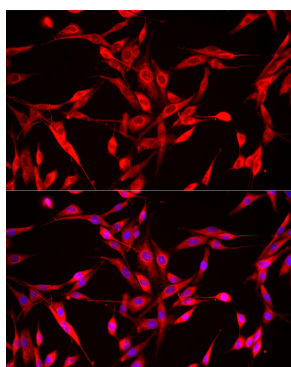
Western blot analysis of various lysates using ENO2 Rabbit pAb (A12341) at 1:500 dilution.
 Secondary antibody: HRP-conjugated Goat anti-Rabbit IgG (H+L) (AS014) at 1:10000 dilution.
 Lysates/proteins: 25µg per lane.
 Blocking buffer: 3% nonfat dry milk in TBST.
 Detection: ECL Basic Kit (RM00020).
 Exposure time: 1s.



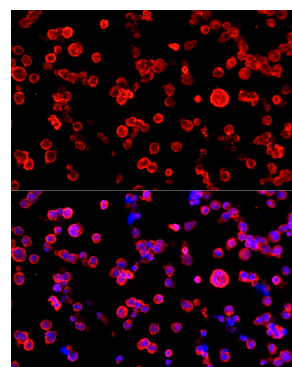
Immunoprecipitation analysis of 600 µg extracts of Mouse brain cells using 3 µg ENO2 antibody (A12341).
 Western blot was performed from the immunoprecipitate using ENO2 antibody (A12341) at a dilution of 1:1000.



Immunofluorescence analysis of HeLa cells using ENO2 Rabbit pAb (A12341) at dilution of 1:20 (40x lens). Secondary antibody: Cy3-conjugated Goat anti-Rabbit IgG (H+L) (AS007) at 1:500 dilution. Blue: DAPI for nuclear staining.



Immunofluorescence analysis of PC-12 cells using ENO2 Rabbit pAb (A12341) at dilution of 1:20 (40x lens). Secondary antibody: Cy3-conjugated Goat anti-Rabbit IgG (H+L) (AS007) at 1:500 dilution. Blue: DAPI for nuclear staining.



Immunofluorescence analysis of Raji cells using ENO2 Rabbit pAb (A12341) at dilution of 1:20 (40x lens). Secondary antibody: Cy3-conjugated Goat anti-Rabbit IgG (H+L) (AS007) at 1:500 dilution. Blue: DAPI for nuclear staining.