

TAL1 Rabbit pAb

Catalog No.: A12927

Basic Information

Observed MW

50kDa

Calculated MW

34kDa

Category

Primary antibody

Applications

WB, ELISA

Cross-Reactivity

Human, Rat

Background

Enables several functions, including DNA-binding transcription factor activity; E-box binding activity; and histone deacetylase binding activity. Involved in several processes, including myeloid cell differentiation; positive regulation of cellular component organization; and positive regulation of erythrocyte differentiation. Located in chromatin and nucleoplasm. Part of transcription regulator complex. Implicated in acute lymphoblastic leukemia.

Recommended Dilutions

WB 1:500 - 1:2000

ELISA Recommended starting concentration is 1 µg/mL. Please optimize the concentration based on your specific assay requirements.

Immunogen Information

Gene ID

6886

Swiss Prot

P17542

Immunogen

Recombinant protein (or fragment). This information is considered to be commercially sensitive.

Synonyms

SCL; TCL5; tal-1; bHLHa17; TAL1

Contact

☎ | 400-999-6126

✉ | cn.market@abclonal.com.cn

🌐 | www.abclonal.com.cn

Product Information

Source

Rabbit

Isotype

IgG

Purification

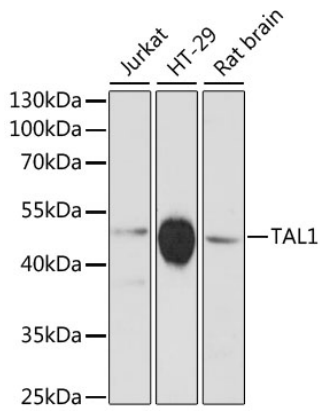
Affinity purification

Storage

Store at -20°C. Avoid freeze / thaw cycles.

Buffer: PBS with 0.01% thimerosal, 50% glycerol, pH7.3.

Validation Data



Western blot analysis of various lysates using TAL1 Rabbit pAb (A12927) at 1:3000 dilution.
Secondary antibody: HRP-conjugated Goat anti-Rabbit IgG (H+L) (AS014) at 1:10000 dilution.
Lysates/proteins: 25µg per lane.
Blocking buffer: 3% nonfat dry milk in TBST.
Detection: ECL Basic Kit (RM00020).
Exposure time: 90s.