

TRMT112 Rabbit pAb

Catalog No.: A14310 **2 Publications**

Basic Information

Observed MW

14kDa

Calculated MW

14kDa

Category

Primary antibody

Applications

WB, ELISA

Cross-Reactivity

Human, Mouse, Rat

Background

Enables protein heterodimerization activity and protein methyltransferase activity. Involved in macromolecule methylation and positive regulation of rRNA processing. Located in nucleoplasm and perinuclear region of cytoplasm. Part of protein-containing complex.

Recommended Dilutions

WB 1:500 - 1:2000

ELISA Recommended starting concentration is 1 µg/mL. Please optimize the concentration based on your specific assay requirements.

Immunogen Information

Gene ID

51504

Swiss Prot

Q9UI30

Immunogen

Recombinant protein (or fragment). This information is considered to be commercially sensitive.

Synonyms

TRM112; HSPC152; HSPC170; hTrm112; TRMT11-2; TRMT112

Contact

☎ | 400-999-6126

✉ | cn.market@abclonal.com.cn

🌐 | www.abclonal.com.cn

Product Information

Source

Rabbit

Isotype

IgG

Purification

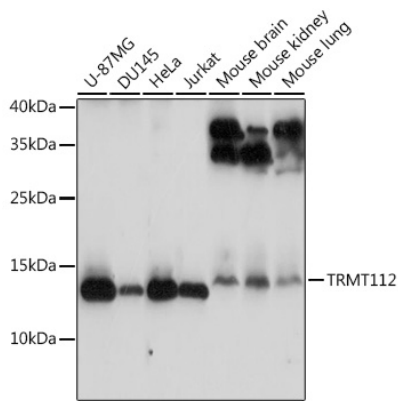
Affinity purification

Storage

Store at -20°C. Avoid freeze / thaw cycles.

Buffer: PBS with 0.01% thimerosal, 50% glycerol, pH7.3.

Validation Data



Western blot analysis of various lysates using TRMT112 Rabbit pAb (A14310) at 1:3000 dilution.
Secondary antibody: HRP-conjugated Goat anti-Rabbit IgG (H+L) (AS014) at 1:10000 dilution.
Lysates/proteins: 25µg per lane.
Blocking buffer: 3% nonfat dry milk in TBST.
Detection: ECL Basic Kit (RM00020).
Exposure time: 90s.