

# GGT5 Rabbit pAb

Catalog No.: A14374 **1 Publications**

## Basic Information

**Observed MW**

62kDa

**Calculated MW**

62kDa

**Category**

Primary antibody

**Applications**

WB, ELISA

**Cross-Reactivity**

Human, Mouse

## Background

This gene is a member of the gamma-glutamyl transpeptidase gene family, and some reports indicate that it is capable of cleaving the gamma-glutamyl moiety of glutathione. The protein encoded by this gene is synthesized as a single, catalytically-inactive polypeptide, that is processed post-transcriptionally to form a heavy and light subunit, with the catalytic activity contained within the small subunit. The encoded enzyme is able to convert leukotriene C4 to leukotriene D4, but appears to have distinct substrate specificity compared to gamma-glutamyl transpeptidase. Alternative splicing results in multiple transcript variants encoding different isoforms.

## Recommended Dilutions

**WB** 1:500 - 1:2000**ELISA** Recommended starting concentration is 1 µg/mL. Please optimize the concentration based on your specific assay requirements.

## Immunogen Information

**Gene ID**

2687

**Swiss Prot**

P36269

**Immunogen**

Recombinant protein (or fragment). This information is considered to be commercially sensitive.

**Synonyms**

GGL; GGT 5; GGTLA1; GGT-REL; GGT5

## Contact

 | 400-999-6126 | [cn.market@abclonal.com.cn](mailto:cn.market@abclonal.com.cn) | [www.abclonal.com.cn](http://www.abclonal.com.cn)

## Product Information

**Source**

Rabbit

**Isotype**

IgG

**Purification**

Affinity purification

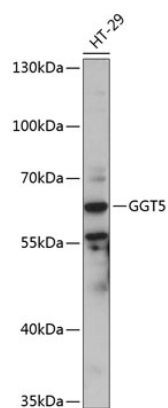
**Storage**

Store at -20°C. Avoid freeze / thaw cycles.

Buffer: PBS with 0.01% thimerosal, 50% glycerol, pH7.3.

## Validation Data

---



Western blot analysis of lysates from HT-29 cells, using GGT5 Rabbit pAb (A14374) at 1:3000 dilution.  
Secondary antibody: HRP-conjugated Goat anti-Rabbit IgG (H+L) (AS014) at 1:10000 dilution.  
Lysates/proteins: 25µg per lane.  
Blocking buffer: 3% nonfat dry milk in TBST.  
Detection: ECL Basic Kit (RM00020).  
Exposure time: 60s.