

# NCR1 Rabbit pAb

Catalog No.: A14499 **2 Publications**

## Basic Information

### Observed MW

34kDa

### Calculated MW

34kDa

### Category

Primary antibody

### Applications

WB, ELISA

### Cross-Reactivity

Human, Mouse, Rat

## Background

Predicted to be involved in cellular defense response; regulation of natural killer cell mediated cytotoxicity; and signal transduction. Predicted to act upstream of or within defense response to virus and detection of virus. Predicted to be located in cell surface. Predicted to be part of SWI/SNF complex. Predicted to be active in plasma membrane. Biomarker of acquired immunodeficiency syndrome; anogenital venereal wart; hepatitis C; and lymphoproliferative syndrome.

## Recommended Dilutions

**WB** 1:500 - 1:1000

**ELISA** Recommended starting concentration is 1 µg/mL. Please optimize the concentration based on your specific assay requirements.

## Immunogen Information

### Gene ID

9437

### Swiss Prot

O76036

### Immunogen

Recombinant protein (or fragment). This information is considered to be commercially sensitive.

### Synonyms

LY94; CD335; NKP46; NK-p46; NCR1

## Contact

☎ | 400-999-6126

✉ | [cn.market@abclonal.com.cn](mailto:cn.market@abclonal.com.cn)

🌐 | [www.abclonal.com.cn](http://www.abclonal.com.cn)

## Product Information

### Source

Rabbit

### Isotype

IgG

### Purification

Affinity purification

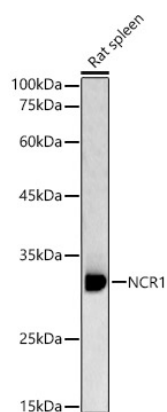
### Storage

Store at -20°C. Avoid freeze / thaw cycles.

Buffer: PBS with 0.05% proclin300, 50% glycerol, pH7.3.

## Validation Data

---



Western blot analysis of lysates from Rat spleen, using NCR1 Rabbit pAb (A14499) at 1:1000 dilution.  
Secondary antibody: HRP-conjugated Goat anti-Rabbit IgG (H+L) (AS014) at 1:10000 dilution.  
Lysates/proteins: 25µg per lane.  
Blocking buffer: 3% nonfat dry milk in TBST.  
Detection: ECL Basic Kit (RM00020).  
Exposure time: 180s.