

ISG20 Rabbit pAb

Catalog No.: A14744 **2 Publications**

Basic Information

Observed MW

20kDa

Calculated MW

20kDa

Category

Primary antibody

Applications

WB, ELISA

Cross-Reactivity

Human, Mouse, Rat

Background

Enables 3'-5' exonuclease activity and RNA binding activity. Involved in defense response to virus; negative regulation of viral genome replication; and nucleobase-containing compound catabolic process. Located in cytoplasm and nuclear lumen.

Recommended Dilutions

WB 1:500 - 1:2000

ELISA Recommended starting concentration is 1 µg/mL. Please optimize the concentration based on your specific assay requirements.

Immunogen Information

Gene ID

3669

Swiss Prot

Q96AZ6

Immunogen

Recombinant protein (or fragment). This information is considered to be commercially sensitive.

Synonyms

CD25; HEM45; ISG20

Contact

 | 400-999-6126

 | cn.market@abclonal.com.cn

 | www.abclonal.com.cn

Product Information

Source

Rabbit

Isotype

IgG

Purification

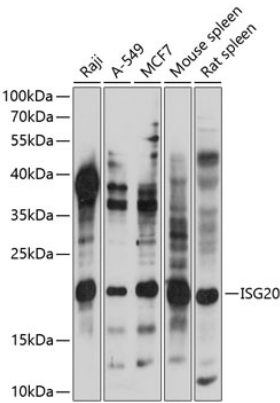
Affinity purification

Storage

Store at -20°C. Avoid freeze / thaw cycles.

Buffer: PBS with 0.01% thimerosal, 50% glycerol, pH7.3.

Validation Data



Western blot analysis of various lysates using ISG20 Rabbit pAb (A14744) at 1:1000 dilution.
Secondary antibody: HRP-conjugated Goat anti-Rabbit IgG (H+L) (AS014) at 1:10000 dilution.
Lysates/proteins: 25µg per lane.
Blocking buffer: 3% nonfat dry milk in TBST.
Detection: ECL Basic Kit (RM00020).
Exposure time: 10s.