

# CDIP1 Rabbit pAb

Catalog No.: A14883

1 Publications

## Basic Information

### Observed MW

22kDa

### Calculated MW

22kDa

### Category

Primary antibody

### Applications

WB, ELISA

### Cross-Reactivity

Mouse, Rat

## Background

Predicted to enable metal ion binding activity. Acts upstream of or within intrinsic apoptotic signaling pathway in response to DNA damage by p53 class mediator and tumor necrosis factor-mediated signaling pathway. Located in cytoplasmic side of late endosome membrane; cytoplasmic side of lysosomal membrane; and nucleus.

## Recommended Dilutions

**WB** 1:500 - 1:2000

**ELISA** Recommended starting concentration is 1 µg/mL. Please optimize the concentration based on your specific assay requirements.

## Immunogen Information

### Gene ID

29965

### Swiss Prot

Q9H305

### Immunogen

Synthetic peptide. This information is considered to be commercially sensitive.

### Synonyms

I1; CDIP; LITAF1; C16orf5; CDIP1

## Contact

☎ | 400-999-6126

✉ | [cn.market@abclonal.com.cn](mailto:cn.market@abclonal.com.cn)

🌐 | [www.abclonal.com.cn](http://www.abclonal.com.cn)

## Product Information

### Source

Rabbit

### Isotype

IgG

### Purification

Affinity purification

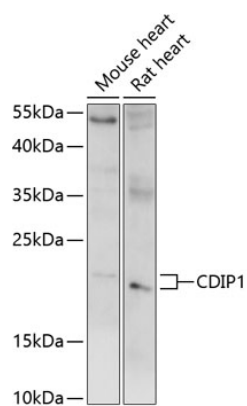
### Storage

Store at -20°C. Avoid freeze / thaw cycles.

Buffer: PBS with 0.01% thimerosal, 50% glycerol, pH7.3.

## Validation Data

---



Western blot analysis of various lysates using CDIP1 Rabbit pAb (A14883) at 1:1000 dilution.  
Secondary antibody: HRP-conjugated Goat anti-Rabbit IgG (H+L) (AS014) at 1:10000 dilution.  
Lysates/proteins: 25µg per lane.  
Blocking buffer: 3% nonfat dry milk in TBST.  
Detection: ECL Basic Kit (RM00020).  
Exposure time: 5s.