

CD147/BSG Rabbit pAb

Catalog No.: A1566

1 Publications

Basic Information

Observed MW

38-65kDa

Calculated MW

42kDa

Category

Primary antibody

Applications

WB,IHC-P,IP,ELISA

Cross-Reactivity

Human, Mouse, Rat

Background

The protein encoded by this gene, basigin, is a plasma membrane protein that is important in spermatogenesis, embryo implantation, neural network formation, and tumor progression. Basigin is also a member of the immunoglobulin superfamily, ubiquitously expressed in various tissues. Multiple transcript variants encoding different isoforms have been found for this gene.

Recommended Dilutions

WB 1:500 - 1:1000

IHC-P 1:50 - 1:200

IP 0.5µg-4µg antibody for
400µg-600µg extracts of
whole cells

ELISA Recommended starting
concentration is 1 µg/mL.
Please optimize the
concentration based on
your specific assay
requirements.

Immunogen Information

Gene ID

682

Swiss Prot

P35613

Immunogen

Synthetic peptide. This information is considered to be commercially sensitive.

Synonyms

OK; 5F7; TCSF; CD147; EMPRIN; HAb18G; EMMPRIN; CD147/BSG

Contact

☎ | 400-999-6126

✉ | cn.market@abclonal.com.cn

🌐 | www.abclonal.com.cn

Product Information

Source

Rabbit

Isotype

IgG

Purification

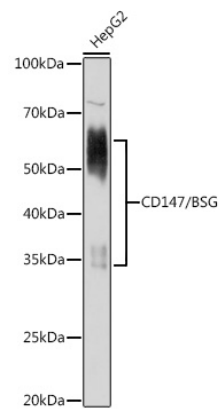
Affinity purification

Storage

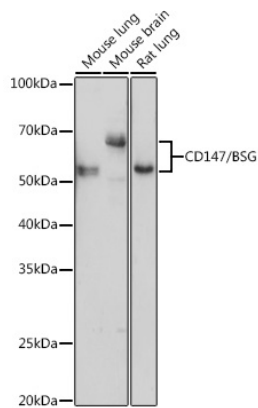
Store at -20°C. Avoid freeze / thaw cycles.

Buffer: PBS containing 50% glycerol, preserved with proclin300 or sodium azide (as specified on the Certificate of Analysis), pH 7.3.

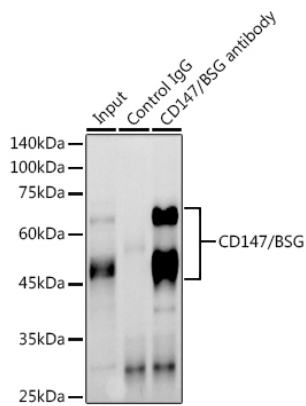
Validation Data



Western blot analysis of lysates from HepG2 cells, using CD147/BSG Rabbit pAb (A1566) at 1:1000 dilution.
Secondary antibody: HRP-conjugated Goat anti-Rabbit IgG (H+L) (AS014) at 1:10000 dilution.
Lysates/proteins: 25µg per lane.
Blocking buffer: 3% nonfat dry milk in TBST.
Detection: ECL Basic Kit (RM00020).
Exposure time: 10s.

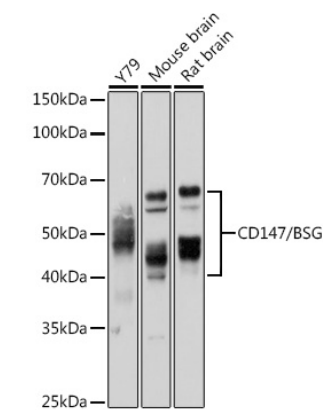


Western blot analysis of various lysates using CD147/BSG Rabbit pAb (A1566) at 1:1000 dilution.
Secondary antibody: HRP-conjugated Goat anti-Rabbit IgG (H+L) (AS014) at 1:10000 dilution.
Lysates/proteins: 25µg per lane.
Blocking buffer: 3% nonfat dry milk in TBST.
Detection: ECL Basic Kit (RM00020).
Exposure time: 180s.

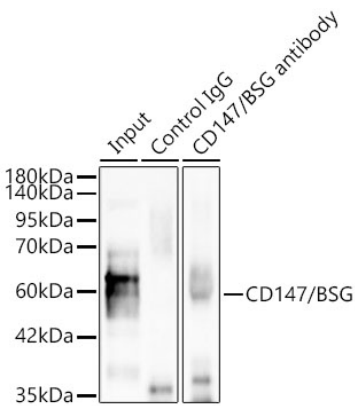


Immunoprecipitation analysis of 600 µg extracts of Mouse brain using 3 µg CD147/BSG antibody (A1566).
Western blot was performed from the immunoprecipitate using CD147/BSG antibody (A1566) at a dilution of 1:1000.

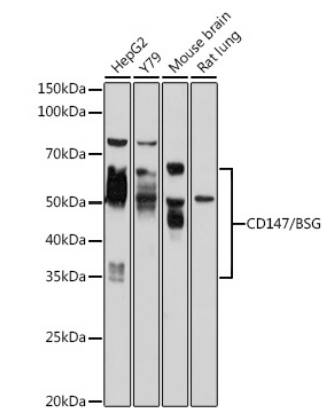
Validation Data



Western blot analysis of various lysates using CD147/BSG Rabbit pAb (A1566) at 1:1000 dilution. Secondary antibody: HRP-conjugated Goat anti-Rabbit IgG (H+L) (AS014) at 1:10000 dilution. Lysates/proteins: 25µg per lane. Blocking buffer: 3% nonfat dry milk in TBST. Detection: ECL Basic Kit (RM00020). Exposure time: 5s.

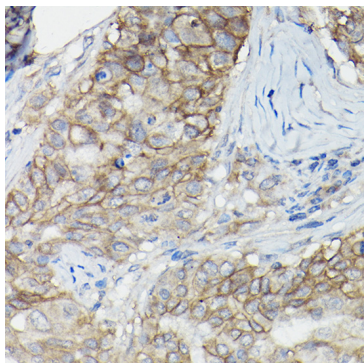


Immunoprecipitation of CD147/BSG in 200 µg extracts from Hep G2 cells using 0.5 µg CD147/BSG Rabbit pAb (A1566). Western blot analysis was performed using CD147/BSG Rabbit pAb (A1566) at 1:2000 dilution.

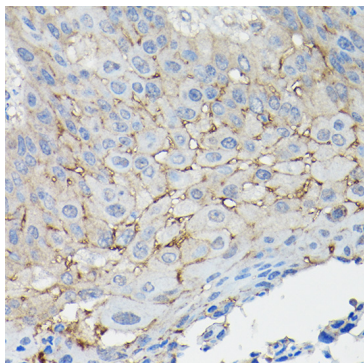


Western blot analysis of various lysates using CD147/BSG Rabbit pAb (A1566) at 1:1000 dilution. Secondary antibody: HRP-conjugated Goat anti-Rabbit IgG (H+L) (AS014) at 1:10000 dilution. Lysates/proteins: 25µg per lane. Blocking buffer: 3% nonfat dry milk in TBST. Detection: ECL Basic Kit (RM00020). Exposure time: 30s.

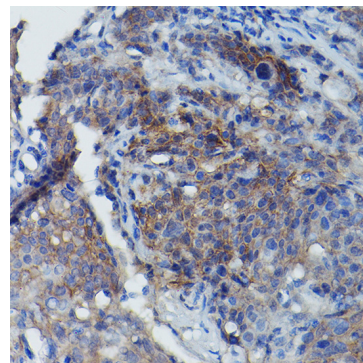
Validation Data



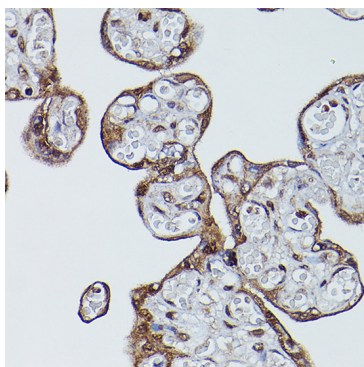
Immunohistochemistry analysis of paraffin-embedded Human breast cancer using CD147/CD147/BSG Rabbit pAb (A1566) at dilution of 1:100 (40x lens). High pressure antigen retrieval performed with 0.01M Citrate buffer (pH 6.0) prior to IHC staining.



Immunohistochemistry analysis of paraffin-embedded Human esophageal cancer using CD147/CD147/BSG Rabbit pAb (A1566) at dilution of 1:100 (40x lens). High pressure antigen retrieval performed with 0.01M Citrate buffer (pH 6.0) prior to IHC staining.



Immunohistochemistry analysis of paraffin-embedded Human cervix cancer using BSG Rabbit pAb (A1566) at dilution of 1:100 (40x lens). High pressure antigen retrieval performed with 0.01M Citrate buffer (pH 6.0) prior to IHC staining.



Immunohistochemistry analysis of paraffin-embedded Human placenta using BSG Rabbit pAb (A1566) at dilution of 1:100 (40x lens). High pressure antigen retrieval performed with 0.01M Citrate buffer (pH 6.0) prior to IHC staining.