

# SUPT6H Rabbit pAb

Catalog No.: A16434

## Basic Information

### Observed MW

260kDa

### Calculated MW

199kDa

### Category

Primary antibody

### Applications

WB,IF/ICC,IP,ELISA

### Cross-Reactivity

Human, Mouse, Rat

## Background

Enables histone binding activity. Involved in negative regulation of histone H3-K27 methylation and positive regulation of transcription elongation from RNA polymerase II promoter. Predicted to be located in nucleoplasm. Predicted to be part of transcription elongation factor complex. Predicted to be active in transcriptionally active chromatin.

## Recommended Dilutions

**WB** 1:500 - 1:2000

**IF/ICC** 1:50 - 1:200

**IP** 0.5µg-4µg antibody for  
400µg-600µg extracts of  
whole cells

**ELISA** Recommended starting  
concentration is 1 µg/mL.  
Please optimize the  
concentration based on  
your specific assay  
requirements.

## Immunogen Information

### Gene ID

6830

### Swiss Prot

Q7KZ85

### Immunogen

Recombinant fusion protein containing a sequence corresponding to amino acids 1500-1726 of human SUPT6H (NP\_003161.2).

### Synonyms

SPT6; SPT6H; emb-5; SUPT6H

## Contact

☎ | 400-999-6126

✉ | [cn.market@abclonal.com.cn](mailto:cn.market@abclonal.com.cn)

🌐 | [www.abclonal.com.cn](http://www.abclonal.com.cn)

## Product Information

### Source

Rabbit

### Isotype

IgG

### Purification

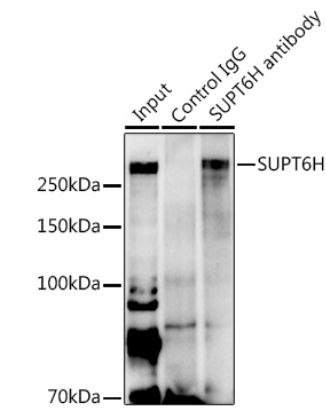
Affinity purification

### Storage

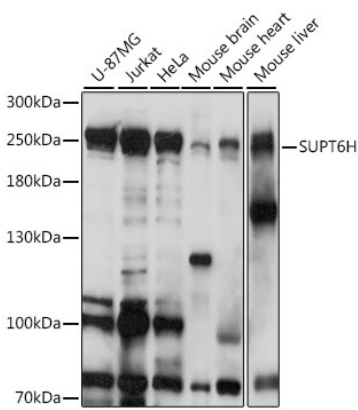
Store at -20°C. Avoid freeze / thaw cycles.

Buffer: PBS with 0.01% thimerosal, 50% glycerol, pH7.3.

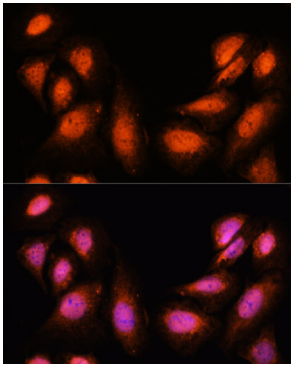
Validation Data



Immunoprecipitation analysis of 600 µg extracts of Mouse heart using 3 µg SUPT6H antibody (A16434). Western blot was performed from the immunoprecipitate using SUPT6H antibody (A16434) at a dilution of 1:500.



Western blot analysis of various lysates using SUPT6H Rabbit pAb (A16434) at 1:1000 dilution. Secondary antibody: HRP-conjugated Goat anti-Rabbit IgG (H+L) (AS014) at 1:10000 dilution. Lysates/proteins: 25µg per lane. Blocking buffer: 3% nonfat dry milk in TBST. Detection: ECL Basic Kit (RM00020). Exposure time: 10s.



Immunofluorescence analysis of U-2 OS cells using SUPT6H Rabbit pAb (A16434) at dilution of 1:100. Secondary antibody: Cy3-conjugated Goat anti-Rabbit IgG (H+L) (AS007) at 1:500 dilution. Blue: DAPI for nuclear staining.