

# PNN Rabbit pAb

Catalog No.: A16954 **1 Publications**

## Basic Information

### Observed MW

130kDa

### Calculated MW

82kDa

### Category

Primary antibody

### Applications

WB, ELISA

### Cross-Reactivity

Human, Rat

## Background

Enables RNA binding activity. Predicted to be involved in cell adhesion and mRNA splicing, via spliceosome. Predicted to act upstream of or within cell-cell adhesion. Located in nuclear speck. Part of catalytic step 2 spliceosome. Colocalizes with exon-exon junction complex.

## Recommended Dilutions

**WB** 1:500 - 1:2000

**ELISA** Recommended starting concentration is 1 µg/mL. Please optimize the concentration based on your specific assay requirements.

## Immunogen Information

### Gene ID

5411

### Swiss Prot

Q9H307

### Immunogen

A synthetic peptide corresponding to a sequence within amino acids 1-100 of human PNN (NP\_002678.2).

### Synonyms

DRS; DRSP; SDK3; memA; PNN

## Contact

☎ | 400-999-6126

✉ | [cn.market@abclonal.com.cn](mailto:cn.market@abclonal.com.cn)

🌐 | [www.abclonal.com.cn](http://www.abclonal.com.cn)

## Product Information

### Source

Rabbit

### Isotype

IgG

### Purification

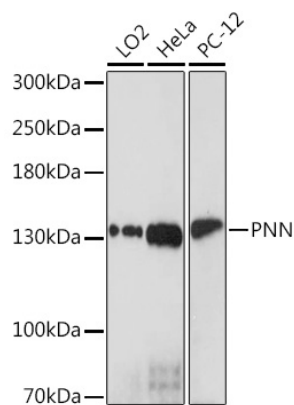
Affinity purification

### Storage

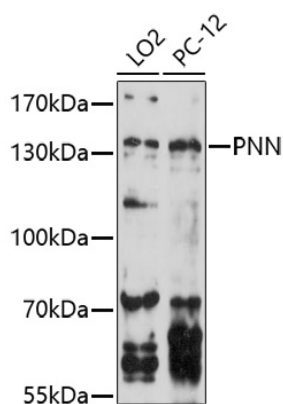
Store at -20°C. Avoid freeze / thaw cycles.

Buffer: PBS with 0.01% thimerosal, 50% glycerol, pH7.3.

## Validation Data



Western blot analysis of various lysates using PNN Rabbit pAb (A16954) at 1:1000 dilution. Secondary antibody: HRP-conjugated Goat anti-Rabbit IgG (H+L) (AS014) at 1:10000 dilution. Lysates/proteins: 25µg per lane. Blocking buffer: 3% nonfat dry milk in TBST. Detection: ECL Basic Kit (RM00020). Exposure time: 120s.



Western blot analysis of various lysates using PNN Rabbit pAb (A16954) at 1:1000 dilution. Secondary antibody: HRP-conjugated Goat anti-Rabbit IgG (H+L) (AS014) at 1:10000 dilution. Lysates/proteins: 25µg per lane. Blocking buffer: 3% nonfat dry milk in TBST. Detection: ECL Enhanced Kit (RM00021). Exposure time: 90s.