

PRKCDBP Rabbit pAb

Catalog No.: A17247 **1 Publications**

Basic Information

Observed MW

35kDa

Calculated MW

28kDa

Category

Primary antibody

Applications

WB, ELISA

Cross-Reactivity

Rat

Background

The protein encoded by this gene was identified as a binding protein of the protein kinase C, delta (PRKCD). The expression of this gene in cultured cell lines is strongly induced by serum starvation. The expression of this protein was found to be down-regulated in various cancer cell lines, suggesting the possible tumor suppressor function of this protein.

Recommended Dilutions

WB 1:500 - 1:2000

ELISA Recommended starting concentration is 1 µg/mL. Please optimize the concentration based on your specific assay requirements.

Immunogen Information

Gene ID

112464

Swiss Prot

Q969G5

Immunogen

Recombinant protein (or fragment). This information is considered to be commercially sensitive.

Synonyms

SRBC; HSRBC; PRKCDBP; cavin-3

Contact

☎ | 400-999-6126

✉ | cn.market@abclonal.com.cn

🌐 | www.abclonal.com.cn

Product Information

Source

Rabbit

Isotype

IgG

Purification

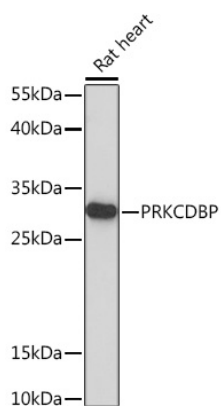
Affinity purification

Storage

Store at -20°C. Avoid freeze / thaw cycles.

Buffer: PBS with 0.01% thimerosal, 50% glycerol, pH7.3.

Validation Data



Western blot analysis of lysates from Rat heart, using PRKCDBP Rabbit pAb (A17247) at 1:1000 dilution.
Secondary antibody: HRP-conjugated Goat anti-Rabbit IgG (H+L) (AS014) at 1:10000 dilution.
Lysates/proteins: 25µg per lane.
Blocking buffer: 3% nonfat dry milk in TBST.
Detection: ECL Basic Kit (RM00020).
Exposure time: 90s.