

CD132/IL-2 R gamma Rabbit pAb

Catalog No.: A1829

1 Publications

Basic Information

Observed MW

70kDa

Calculated MW

42kDa

Category

Primary antibody

Applications

WB, ELISA

Cross-Reactivity

Human, Mouse

Background

The protein encoded by this gene is an important signaling component of many interleukin receptors, including those of interleukin -2, -4, -7 and -21, and is thus referred to as the common gamma chain. Mutations in this gene cause X-linked severe combined immunodeficiency (XSCID), as well as X-linked combined immunodeficiency (XCID), a less severe immunodeficiency disorder.

Recommended Dilutions

WB 1:500 - 1:1000

ELISA Recommended starting concentration is 1 µg/mL. Please optimize the concentration based on your specific assay requirements.

Immunogen Information

Gene ID

3561

Swiss Prot

P31785

Immunogen

Recombinant fusion protein containing a sequence corresponding to amino acids 290-369 of human CD132/IL-2 R gamma (NP_000197.1).

Synonyms

P64; CIDX; IMD4; CD132; SCIDX; IL-2RG; SCIDX1; CD132/IL-2 R gamma

Contact

☎ | 400-999-6126

✉ | cn.market@abclonal.com.cn

🌐 | www.abclonal.com.cn

Product Information

Source

Rabbit

Isotype

IgG

Purification

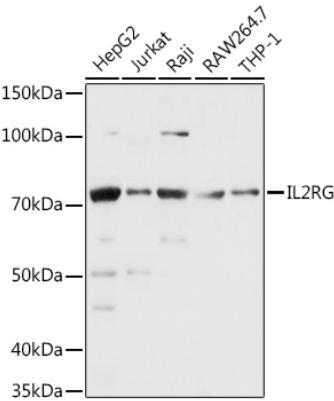
Affinity purification

Storage

Store at -20°C. Avoid freeze / thaw cycles.

Buffer: PBS with 0.09% Sodium azide, 50% glycerol, pH7.3.

Validation Data



Western blot analysis of various lysates using CD132/IL-2 R gamma Rabbit pAb (A1829) at 1:1000 dilution.
Secondary antibody: HRP-conjugated Goat anti-Rabbit IgG (H+L) (AS014) at 1:10000 dilution.
Lysates/proteins: 25µg per lane.
Blocking buffer: 3% nonfat dry milk in TBST.
Detection: ECL Basic Kit (RM00020).
Exposure time: 5s.