

NDUFAB1 Rabbit pAb

Catalog No.: A19326

Basic Information

Observed MW

Refer to figures

Calculated MW

17kDa

Category

Primary antibody

Applications

IF/ICC,ELISA

Cross-Reactivity

Mouse

Background

Predicted to enable acyl binding activity; acyl carrier activity; and fatty acid binding activity. Involved in mitochondrial respiratory chain complex I assembly and protein lipoylation. Located in mitochondrion and nucleoplasm. Part of mitochondrial respiratory chain complex I. Colocalizes with mitochondrial large ribosomal subunit.

Recommended Dilutions

IF/ICC 1:50 - 1:200

ELISA Recommended starting concentration is 1 µg/mL. Please optimize the concentration based on your specific assay requirements.

Immunogen Information

Gene ID

4706

Swiss Prot

O14561

Immunogen

Synthetic peptide. This information is considered to be commercially sensitive.

Synonyms

ACP; ACP1; SDAP; FASN2A; NDUFAB1

Contact

 | 400-999-6126

 | cn.market@abclonal.com.cn

 | www.abclonal.com.cn

Product Information

Source

Rabbit

Isotype

IgG

Purification

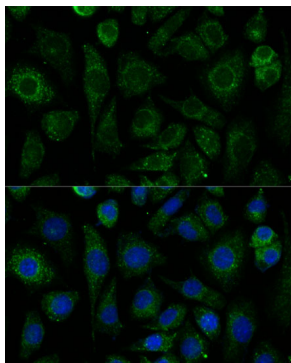
Affinity purification

Storage

Store at -20°C. Avoid freeze / thaw cycles.

Buffer: PBS with 0.01% thimerosal, 50% glycerol, pH7.3.

Validation Data



Immunofluorescence analysis of L929 cells using NDUFAB1 Rabbit pAb (A19326) at dilution of 1:100. Secondary antibody: Cy3-conjugated Goat anti-Rabbit IgG (H+L) (AS007) at 1:500 dilution. Blue: DAPI for nuclear staining.