

# [KO Validated] HuR/ELAVL1 Rabbit mAb

Catalog No.: A19622 **KO Validated** **Recombinant** **12 Publications**

## Basic Information

### Observed MW

36 kDa

### Calculated MW

36 kDa

### Category

Primary antibody

### Applications

WB, IP, IF/ICC, IHC-P, ELISA

### Cross-Reactivity

Human, Mouse, Rat

### CloneNo number

ARC0101

## Background

The protein encoded by this gene is a member of the ELAVL family of RNA-binding proteins that contain several RNA recognition motifs, and selectively bind AU-rich elements (AREs) found in the 3' untranslated regions of mRNAs. AREs signal degradation of mRNAs as a means to regulate gene expression, thus by binding AREs, the ELAVL family of proteins play a role in stabilizing ARE-containing mRNAs. This gene has been implicated in a variety of biological processes and has been linked to a number of diseases, including cancer. It is highly expressed in many cancers, and could be potentially useful in cancer diagnosis, prognosis, and therapy.

## Recommended Dilutions

**WB** 1:1000 - 1:6000

**IP** 0.5 µg - 4 µg antibody for  
200 µg - 400 µg extracts  
of whole cells

**IF/ICC** 1:100 - 1:1000

**IHC-P** 1:200 - 1:2000

**ELISA** Recommended starting  
concentration is 1 µg/mL.  
Please optimize the  
concentration based on  
your specific assay  
requirements.

## Immunogen Information

### Gene ID

1994

### Swiss Prot

Q15717

### Immunogen

Synthetic peptide. This information is considered to be commercially sensitive.

### Synonyms

HUR; Hua; MeIG; ELAV1; L1

## Product Information

### Source

Rabbit

### Isotype

IgG

### Purification

Affinity purification

### Storage

Store at -20°C. Avoid freeze / thaw cycles.

Buffer: PBS containing 50% glycerol and 0.05% BSA, preserved with proclin300 or sodium azide (as specified on the Certificate of Analysis), pH 7.3.

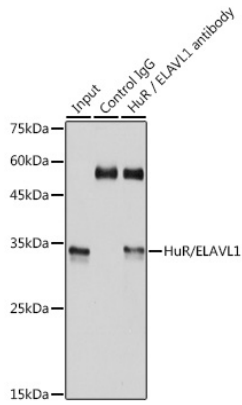
## Contact

 | 400-999-6126

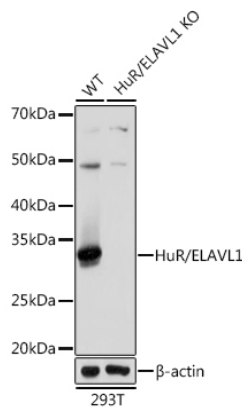
 | [cn.market@abclonal.com.cn](mailto:cn.market@abclonal.com.cn)

 | [www.abclonal.com.cn](http://www.abclonal.com.cn)

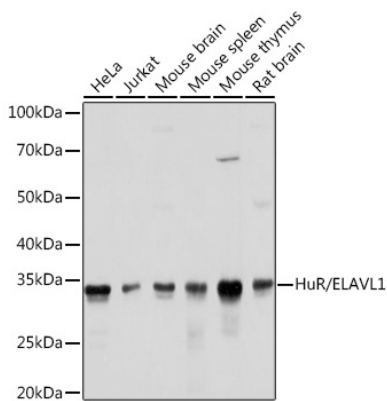
## Validation Data



Immunoprecipitation analysis of 300  $\mu$ g extracts of 293T cells using 3  $\mu$ g HuR/ELAVL1 antibody (A19622). Western blot was performed from the immunoprecipitate using HuR/ELAVL1 antibody (A19622) at a dilution of 1:1000.

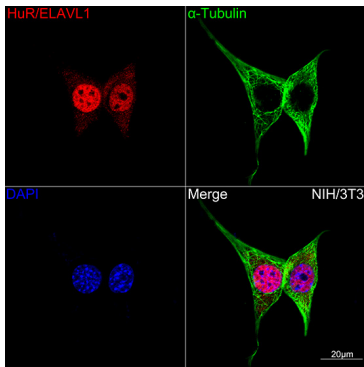


Western blot analysis of lysates from wild type (WT) and HuR/ELAVL1 knockout (KO) 293T cells, using [KO Validated] HuR/ELAVL1 Rabbit mAb (A19622) at 1:1000 dilution. Secondary antibody: HRP-conjugated Goat anti-Rabbit IgG (H+L) (AS014) at 1:10000 dilution. Lysates/proteins: 25 $\mu$ g per lane. Blocking buffer: 3% nonfat dry milk in TBST. Detection: ECL Basic Kit (RM00020). Exposure time: 1s.

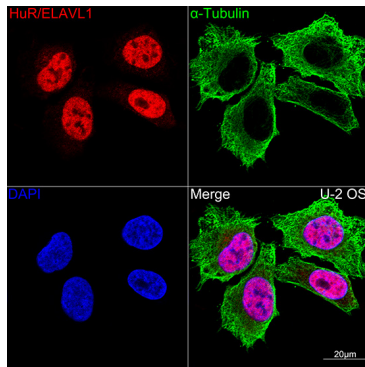


Western blot analysis of various lysates using [KO Validated] HuR/ELAVL1 Rabbit mAb (A19622) at 1:1000 dilution. Secondary antibody: HRP-conjugated Goat anti-Rabbit IgG (H+L) (AS014) at 1:10000 dilution. Lysates/proteins: 25 $\mu$ g per lane. Blocking buffer: 3% nonfat dry milk in TBST. Detection: ECL Basic Kit (RM00020). Exposure time: 1s.

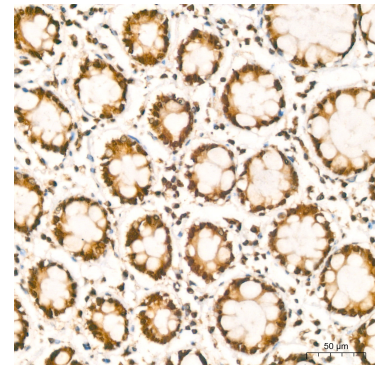
## Validation Data



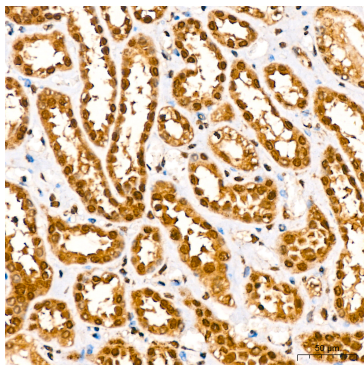
Confocal imaging of NIH/3T3 cells using [KO Validated] HuR/ELAVL1 Rabbit mAb (A19622,dilution 1:100)(Red). The cells were counterstained with  $\alpha$ -Tubulin Mouse mAb (AC012,dilution 1:400) (Green). DAPI was used for nuclear staining (blue). Objective: 100x.



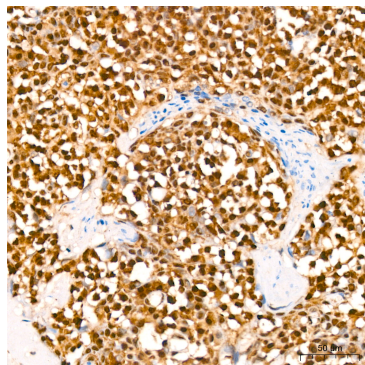
Confocal imaging of U-2 OS cells using [KO Validated] HuR/ELAVL1 Rabbit mAb (A19622,dilution 1:100)(Red). The cells were counterstained with  $\alpha$ -Tubulin Mouse mAb (AC012,dilution 1:400) (Green). DAPI was used for nuclear staining (blue). Objective: 100x.



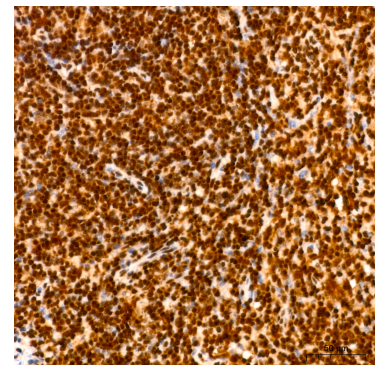
Immunohistochemistry analysis of paraffin-embedded Human colon carcinoma using [KO Validated] HuR/ELAVL1 Rabbit mAb (A19622) at dilution of 1:200 (40x lens). High pressure antigen retrieval performed with 0.01M Citrate buffer (pH 6.0) prior to IHC staining.



Immunohistochemistry analysis of paraffin-embedded Human kidney using [KO Validated] HuR/ELAVL1 Rabbit mAb (A19622) at dilution of 1:200 (40x lens). High pressure antigen retrieval performed with 0.01M Citrate buffer (pH 6.0) prior to IHC staining.



Immunohistochemistry analysis of paraffin-embedded Human tonsil using [KO Validated] HuR/ELAVL1 Rabbit mAb (A19622) at dilution of 1:200 (40x lens). High pressure antigen retrieval performed with 0.01M Citrate buffer (pH 6.0) prior to IHC staining.



Immunohistochemistry analysis of paraffin-embedded Mouse spleen using [KO Validated] HuR/ELAVL1 Rabbit mAb (A19622) at dilution of 1:200 (40x lens). High pressure antigen retrieval performed with 0.01M Citrate buffer (pH 6.0) prior to IHC staining.