

[KD Validated] Bcl-2 Rabbit mAb

Catalog No.: A19693 **Recombinant** **207 Publications**

Basic Information

Observed MW

26 kDa

Calculated MW

26 kDa

Category

Primary antibody

Applications

WB,IHC-P,IP,ELISA

Cross-Reactivity

Human, Mouse

CloneNo number

ARC0173

Background

This gene encodes an integral outer mitochondrial membrane protein that blocks the apoptotic death of some cells such as lymphocytes. Constitutive expression of BCL2, such as in the case of translocation of BCL2 to Ig heavy chain locus, is thought to be the cause of follicular lymphoma. Alternative splicing results in multiple transcript variants.

Recommended Dilutions

WB 1:3000 - 1:15000

IHC-P 1:1000 - 1:4000

IP 0.5µg-4µg antibody for 100µg-300µg extracts of whole cells

ELISA Recommended starting concentration is 1 µg/mL. Please optimize the concentration based on your specific assay requirements.

Immunogen Information

Gene ID

596

Swiss Prot

P10415

Immunogen

Recombinant protein (or fragment). This information is considered to be commercially sensitive.

Synonyms

Bcl-2; PPP1R50

Contact

☎ | 400-999-6126

✉ | cn.market@abclonal.com.cn

🌐 | www.abclonal.com.cn

Product Information

Source

Rabbit

Isotype

IgG

Purification

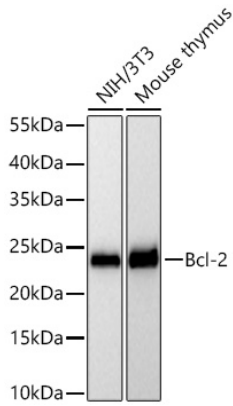
Affinity purification

Storage

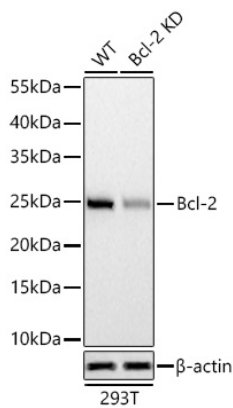
Store at -20°C. Avoid freeze / thaw cycles.

Buffer: PBS containing 50% glycerol and 0.05% BSA, preserved with proclin300 or sodium azide (as specified on the Certificate of Analysis), pH 7.3.

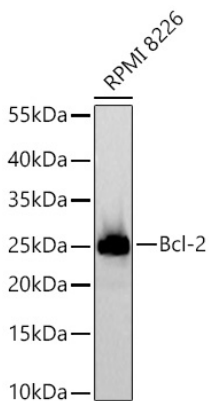
Validation Data



Western blot analysis of various lysates using [KD Validated] Bcl-2 Rabbit mAb (A19693) at 1:7000 dilution incubated overnight at 4°C.
Secondary antibody: Goat anti-Rabbit IgG (H+L) (AS014) at 1:10000 dilution.
Lysates/proteins: 25 µg per lane.
Blocking buffer: 3% nonfat dry milk in TBST.
Detection: ECL Basic Kit (RM00020).
Exposure time: 45 s.

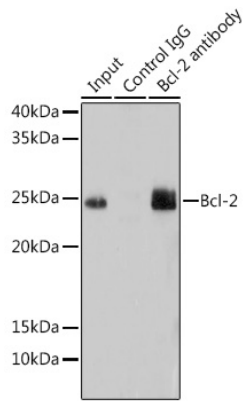


Western blot analysis of lysates from wild type (WT) and Bcl-2 knockdown (KD) 293T cells using [KD Validated] Bcl-2 Rabbit mAb (A19693) at 1:7000 dilution incubated overnight at 4°C.
Secondary antibody: HRP-conjugated Goat anti-Rabbit IgG (H+L) (AS014) at 1:10000 dilution.
Lysates/proteins: 25 µg per lane.
Blocking buffer: 3% nonfat dry milk in TBST.
Detection: ECL Basic Kit (RM00020).
Exposure time: 90 s.

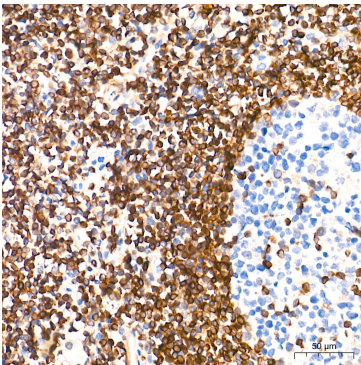


Western blot analysis of lysates from RPMI 8226 cells using [KD Validated] Bcl-2 Rabbit mAb (A19693) at 1:7000 dilution incubated overnight at 4°C.
Secondary antibody: HRP-conjugated Goat anti-Rabbit IgG (H+L) (AS014) at 1:10000 dilution.
Lysates/proteins: 25 µg per lane.
Blocking buffer: 3% nonfat dry milk in TBST.
Detection: ECL Basic Kit (RM00020).
Exposure time: 45 s.

Validation Data



Immunoprecipitation of Bcl-2 from 200 µg extracts of Mouse lung tissue was performed using 3 µg of [KD Validated] Bcl-2 Rabbit mAb (A19693). Rabbit Control IgG (AC005) was used to precipitate the Control IgG sample. IP samples were eluted with 1x Laemmli Buffer. The Input lane represents 10% of the total input. Western blot analysis of immunoprecipitates was conducted using [KD Validated] Bcl-2 Rabbit mAb (A19693) at a dilution of 1:1000.



Immunohistochemistry analysis of paraffin-embedded Human tonsil tissue using [KD Validated] Bcl-2 Rabbit mAb (A19693) at a dilution of 1:2000 (40x lens). High pressure antigen retrieval performed with 0.01M Tris-EDTA Buffer (pH 9.0) prior to IHC staining.