

CD38 Rabbit mAb

Catalog No.: A20215

Recombinant

1 Publications

Basic Information

Observed MW

Refer to figures

Calculated MW

34kDa

Category

Primary antibody

Applications

FC, ELISA

Cross-Reactivity

Human

CloneNo number

ARC5131-01

Background

The protein encoded by this gene is a non-lineage-restricted, type II transmembrane glycoprotein that synthesizes and hydrolyzes cyclic adenosine 5'-diphosphate-ribose, an intracellular calcium ion mobilizing messenger. The release of soluble protein and the ability of membrane-bound protein to become internalized indicate both extracellular and intracellular functions for the protein. This protein has an N-terminal cytoplasmic tail, a single membrane-spanning domain, and a C-terminal extracellular region with four N-glycosylation sites. Crystal structure analysis demonstrates that the functional molecule is a dimer, with the central portion containing the catalytic site. It is used as a prognostic marker for patients with chronic lymphocytic leukemia. Alternative splicing results in multiple transcript variants.

Recommended Dilutions

FC 1:50 - 1:200

ELISA Recommended starting concentration is 1 µg/mL. Please optimize the concentration based on your specific assay requirements.

Immunogen Information

Gene ID

952

Swiss Prot

P28907

Immunogen

Recombinant protein (or fragment). This information is considered to be commercially sensitive.

Synonyms

ADPRC1; cADPR1; ADPRC 1; CD38

Contact

 | 400-999-6126 | cn.market@abclonal.com.cn | www.abclonal.com.cn

Product Information

Source

Rabbit

Isotype

IgG

Purification

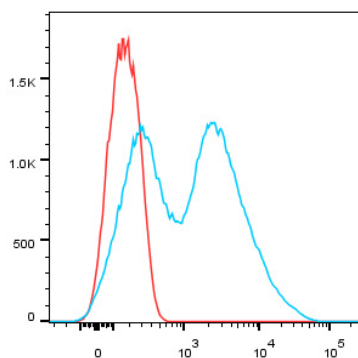
Affinity purification

Storage

Store at -20°C. Avoid freeze / thaw cycles.

Buffer: PBS with 0.09% Sodium azide, 0.05% BSA, 50% glycerol, pH7.3.

Validation Data



Human peripheral blood lymphocytes stained with CD38 Rabbit mAb (10 µg/mL) plus FITC conjugated goat anti-rabbit IgG (Blue). Secondary antibody only staining (red) were used as a control.