

Caspase-1 Rabbit pAb

Catalog No.: A20470 **2 Publications**

Basic Information

Observed MW

48kDa

Calculated MW

46kDa

Category

Primary antibody

Applications

WB, ELISA

Cross-Reactivity

Mouse

Background

Enables cysteine-type endopeptidase activity. Involved in several processes, including positive regulation of I-kappaB kinase/NF-kappaB signaling; positive regulation of interleukin-1 beta production; and protein autoprocessing. Acts upstream of or within several processes, including membrane hyperpolarization; mitochondrial depolarization; and positive regulation of interleukin-1 alpha production. Located in extracellular region. Part of IPAF inflammasome complex. Is expressed in knee joint and metanephros. Orthologous to human CASP1 (caspase 1).

Recommended Dilutions

WB 1:500 - 1:1000**ELISA** Recommended starting concentration is 1 µg/mL. Please optimize the concentration based on your specific assay requirements.

Immunogen Information

Gene ID

12362

Swiss Prot

P29452

Immunogen

A synthetic peptide corresponding to a sequence within amino acids 200-300 of mouse CASP1 (NP_033937.2).

Synonyms

ICE; I11bc; CASP1

Contact

 | 400-999-6126 | cn.market@abclonal.com.cn | www.abclonal.com.cn

Product Information

Source

Rabbit

Isotype

IgG

Purification

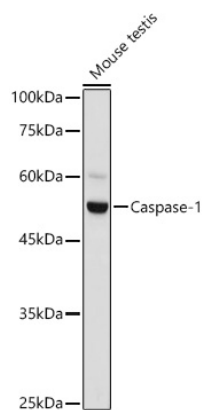
Affinity purification

Storage

Store at -20°C. Avoid freeze / thaw cycles.

Buffer: PBS with 0.05% proclin300, 50% glycerol, pH7.3.

Validation Data



Western blot analysis of lysates from Mouse testis, using CASP1 Rabbit pAb (A20470) at 1:1000 dilution.
Secondary antibody: HRP-conjugated Goat anti-Rabbit IgG (H+L) (AS014) at 1:10000 dilution.
Lysates/proteins: 25µg per lane.
Blocking buffer: 3% nonfat dry milk in TBST.
Detection: ECL Basic Kit (RM00020).
Exposure time: 1s.