

IL18R1/IL-18 R alpha Rabbit mAb

Catalog No.: A21208 **Recombinant** **4 Publications**

Basic Information

Observed MW

95kDa (Recombinant Human IL18R1 Protein)

Calculated MW

62kDa

Category

Primary antibody

Applications

WB, ELISA

Cross-Reactivity

Human

CloneNo number

ARC52216

Background

The protein encoded by this gene is a cytokine receptor that belongs to the interleukin 1 receptor family. This receptor specifically binds interleukin 18 (IL18), and is essential for IL18 mediated signal transduction. IFN-alpha and IL12 are reported to induce the expression of this receptor in NK and T cells. This gene along with four other members of the interleukin 1 receptor family, including IL1R2, IL1R1, ILRL2 (IL-1Rrp2), and IL1RL1 (T1/ST2), form a gene cluster on chromosome 2q. Alternatively spliced transcript variants encoding different isoforms have been found for this gene.

Recommended Dilutions

WB 1:1000 - 1:5000

ELISA Recommended starting concentration is 1 µg/mL. Please optimize the concentration based on your specific assay requirements.

Immunogen Information

Gene ID

8809

Swiss Prot

Q13478

Immunogen

Recombinant protein (or fragment). This information is considered to be commercially sensitive.

Synonyms

CD218a; IL18RA; IL1RRP; CDw218a; IL-1Rrp; IL-18Ralpha; IL18Ralpha2; IL-18R-alpha; IL18R1/IL-18 R alpha

Contact

☎ | 400-999-6126

✉ | cn.market@abclonal.com.cn

🌐 | www.abclonal.com.cn

Product Information

Source

Rabbit

Isotype

IgG

Purification

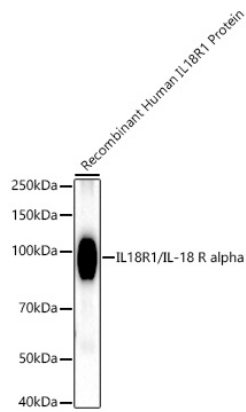
Affinity purification

Storage

Store at -20°C. Avoid freeze / thaw cycles.

Buffer: PBS containing 50% glycerol and 0.05% BSA, preserved with proclin300 or sodium azide (as specified on the Certificate of Analysis), pH 7.3.

Validation Data



Western blot analysis of Recombinant Human IL-18R1/CD218a Protein (RP00097), using IL18R1/IL-18 R alpha Rabbit mAb (A21208) at1:1600 dilution.
Secondary antibody: HRP-conjugated Goat anti-Rabbit IgG (H+L) (AS014) at1:10000 dilution.
Lysates/proteins: 10ng per lane.
Blocking buffer: 3% nonfat dry milk in TBST.
Detection: ECL Basic Kit (RM00020).
Exposure time: 30s.