

# L3MBTL3 Rabbit mAb

Catalog No.: A21932 **Recombinant**

## Basic Information

### Observed MW

100kDa

### Calculated MW

88kDa

### Category

Primary antibody

### Applications

WB,IP,ELISA

### Cross-Reactivity

Human

### CloneNo number

ARC54019

## Background

This gene encodes a member of the malignant brain tumor (MBT) family of chromatin interacting transcriptional repressors. Members of this family function as methyl-lysine readers, which recognize methylated lysine residues on histone protein tails, and are associated with the repression of gene expression. The encoded protein may regulate hematopoiesis. Homozygous deletion of this gene has been observed in human patients with medulloblastoma.

## Recommended Dilutions

**WB** 1:2000 - 1:20000

**IP** 0.5µg-4µg antibody for  
200µg-400µg extracts of  
whole cells

**ELISA** Recommended starting  
concentration is 1 µg/mL.  
Please optimize the  
concentration based on  
your specific assay  
requirements.

## Immunogen Information

### Gene ID

84456

### Swiss Prot

Q96JM7

### Immunogen

Recombinant protein (or fragment). This information is considered to be commercially sensitive.

### Synonyms

MBT1; MBT-1; L3MBTL3

## Contact

☎ | 400-999-6126

✉ | [cn.market@abclonal.com.cn](mailto:cn.market@abclonal.com.cn)

🌐 | [www.abclonal.com.cn](http://www.abclonal.com.cn)

## Product Information

### Source

Rabbit

### Isotype

IgG

### Purification

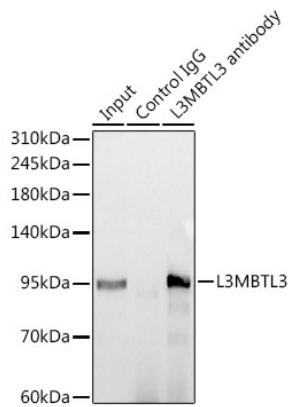
Affinity purification

### Storage

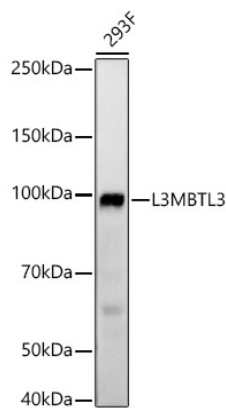
Store at -20°C. Avoid freeze / thaw cycles.

Buffer: PBS containing 50% glycerol and 0.05% BSA, preserved with proclin300 or sodium azide (as specified on the Certificate of Analysis), pH 7.3.

Validation Data



Immunoprecipitation analysis of 300 µg extracts from 293F cells 3 µg L3MBTL3 Rabbit mAb (A21932 1:100).  
Western blot was performed from the immunoprecipitate using L3MBTL3 Rabbit mAb (A21932) at a dilution of 1:2000.  
Secondary antibody: HRP Goat Anti-Rabbit IgG (H+L) (AS014) at 1:5000 dilution.



Western blot analysis of lysates from 293F cells, using L3MBTL3 Rabbit mAb (A21932) at 1:20000 dilution.  
Secondary antibody: HRP-conjugated Goat anti-Rabbit IgG (H+L) (AS014) at 1:10000 dilution.  
Lysates/proteins: 25µg per lane.  
Blocking buffer: 3% nonfat dry milk in TBST.  
Detection: ECL Basic Kit (RM00020).  
Exposure time: 180s.