

DREB1B Rabbit pAb

Catalog No.: A21961

Basic Information

Observed MW

25kDa

Calculated MW

24kDa

Category

Primary antibody

Applications

WB, ELISA

Cross-Reactivity

Arabidopsis thaliana

Background

Transcriptional activator that binds to the DRE/CRT regulatory element and induces COR (cold-regulated) gene expression increasing plant freezing tolerance. It encodes a member of the DREB subfamily A-1 of ERF/AP2 transcription factor family (CBF1). The protein contains one AP2 domain. There are six members in this subfamily, including CBF1, CBF2, and CBF3. This gene is involved in response to low temperature and abscisic acid.

Recommended Dilutions

WB 1:500 - 1:1000

ELISA Recommended starting concentration is 1 µg/mL. Please optimize the concentration based on your specific assay requirements.

Immunogen Information

Gene ID

828653

Swiss Prot

P93835

Immunogen

Synthetic peptide. This information is considered to be commercially sensitive.

Synonyms

ATCBF1; C-repeat/DRE binding factor 1; DRE BINDING PROTEIN 1B; DREB1B; T30C3.11; TRANSCRIPTIONAL ACTIVATOR CBF1

Contact

☎ | 400-999-6126

✉ | cn.market@abclonal.com.cn

🌐 | www.abclonal.com.cn

Product Information

Source

Rabbit

Isotype

IgG

Purification

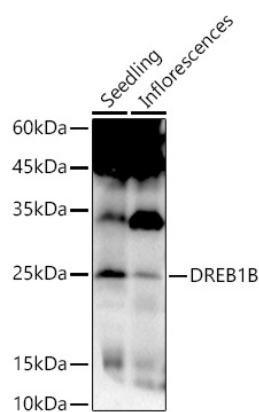
Affinity purification

Storage

Store at -20°C. Avoid freeze / thaw cycles.

Buffer: PBS with 0.05% proclin300, 50% glycerol, pH7.3.

Validation Data



Western blot analysis of extracts of various tissues from *Arabidopsis thaliana*, using DREB1B Rabbit pAb (A21961) at 1:1000 dilution.

Secondary antibody: HRP-conjugated Goat anti-Rabbit IgG (H+L) (AS014) at 1:10000 dilution.

Lysates/proteins: 25µg per lane.

Blocking buffer: 3% nonfat dry milk in TBST.

Detection: ECL Basic Kit (RM00020).

Exposure time: 30s.