

# IL1 $\beta$ Rabbit mAb

Catalog No.: A22257

Recombinant

12 Publications

## Basic Information

### Observed MW

19kDa/17/31kDa

### Calculated MW

31kDa

### Category

Primary antibody

### Applications

WB,IF/ICC,ELISA

### Cross-Reactivity

Mouse

### CloneNo number

ARC56180

## Background

The protein encoded by this gene is a member of the interleukin 1 cytokine family. This cytokine is produced by activated macrophages as a proprotein, which is proteolytically processed to its active form by caspase 1. The encoded protein plays a role in thymocyte proliferation and is involved in the inflammatory response.

## Recommended Dilutions

**WB** 1:500 - 1:2000

**IF/ICC** 1:200 - 1:800

**ELISA** Recommended starting concentration is 1  $\mu$ g/mL. Please optimize the concentration based on your specific assay requirements.

## Immunogen Information

### Gene ID

16176

### Swiss Prot

P10749

### Immunogen

Recombinant protein (or fragment). This information is considered to be commercially sensitive.

### Synonyms

IL-1b; IL-1beta; IL1 $\beta$

## Contact

☎ | 400-999-6126

✉ | [cn.market@abclonal.com.cn](mailto:cn.market@abclonal.com.cn)

🌐 | [www.abclonal.com.cn](http://www.abclonal.com.cn)

## Product Information

### Source

Rabbit

### Isotype

IgG

### Purification

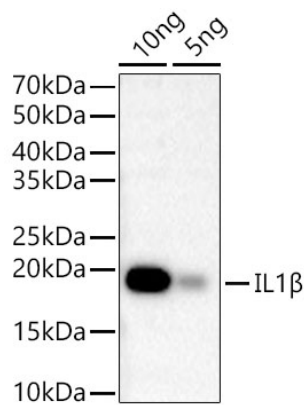
Affinity purification

### Storage

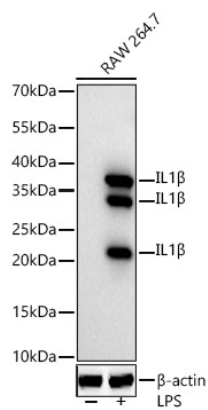
Store at -20°C. Avoid freeze / thaw cycles.

Buffer: PBS containing 50% glycerol and 0.05% BSA, preserved with proclin300 or sodium azide (as specified on the Certificate of Analysis), pH 7.3.

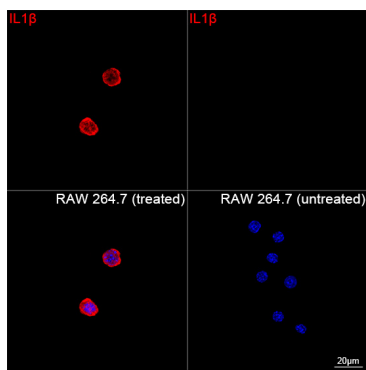
Validation Data



Western blot analysis of Recombinant Mouse IL-1 beta Protein (RP01340), using IL1β Rabbit mAb (A22257) at 1:2000 dilution.  
Secondary antibody: HRP-conjugated Goat anti-Rabbit IgG (H+L) (AS014) at 1:10000 dilution.  
Lysates/proteins: 10ng/5ng per lane.  
Blocking buffer: 3% nonfat dry milk in TBST.  
Detection: ECL Basic Kit (RM00020).  
Exposure time: 20s.



Western blot analysis of lysates from RAW 264.7 cells using IL1β Rabbit mAb (A22257) at 1:1000 dilution incubated overnight at 4°C. Raw264.7 cells were treated with LPS (1 μg/ml) at 37°C for 8 hours.  
Secondary antibody: HRP-conjugated Goat anti-Rabbit IgG (H+L) (AS014) at 1:10000 dilution.  
Lysates/proteins: 30 μg per lane.  
Blocking buffer: 3 % nonfat dry milk in TBST.  
Detection: ECL Basic Kit (RM00020).  
Exposure time: 90s.



Confocal imaging of RAW 264.7 cells (treated with BFA and LPS) and RAW 264.7 cells (untreated) using IL1β Rabbit mAb (A22257, dilution 1:200) followed by a further incubation with Cy3 Goat Anti-Rabbit IgG (H+L) (AS007, dilution 1:500) (Red). DAPI was used for nuclear staining (Blue).  
Objective: 100x.