

ABflo® 488 Rabbit anti-Human CD225/IFITM1 mAb

Catalog No.: A22310

Basic Information

Observed MW

Calculated MW
14kDa

Category
Primary antibody

Applications
IF/ICC,FC (intra)

Cross-Reactivity
Human

CloneNo number
ARC55310

Conjugate
ABflo® 488. Ex:491nm. Em:516nm.

Background

Interferon-induced transmembrane (IFITM) proteins are a family of interferon induced antiviral proteins. The family contains five members, including IFITM1, IFITM2 and IFITM3 that belong to the CD225 superfamily. The protein encoded by this gene restricts cellular entry by diverse viral pathogens, such as influenza A virus, Ebola virus and Sars-CoV-2.

Recommended Dilutions

IF/ICC	1:50 - 1:200
FC (intra)	5 µl per 10 ⁶ cells in 100 µl volume

Immunogen Information

Gene ID 8519	Swiss Prot P13164
------------------------	-----------------------------

Immunogen

Recombinant protein (or fragment). This information is considered to be commercially sensitive.

Synonyms

9-27; CD225; IFI17; LEU13; DSPA2a

Contact

	400-999-6126
	cn.market@abclonal.com.cn
	www.abclonal.com.cn

Product Information

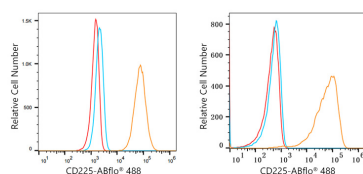
Source Rabbit	Isotype IgG	Purification Affinity purification
-------------------------	-----------------------	--

Storage

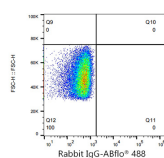
Store at 2-8°C. Avoid freeze.

Buffer: PBS containing 0.2% BSA, preserved with proclin300 or sodium azide (as specified on the Certificate of Analysis), pH 7.3.

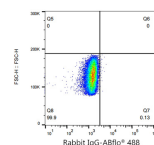
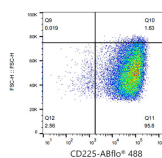
Validation Data



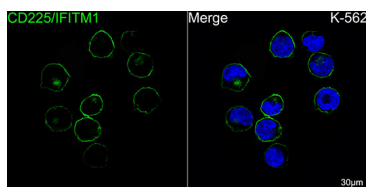
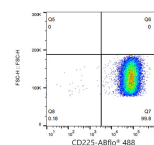
Flow cytometry: 1×10^6 U-251MG cells (Low Expression, left) and K-562 cells (right) were intracellularly-stained with ABflo® 488 Rabbit anti-Human CD225/IFITM1 mAb (A22310, 2 $\mu\text{g}/\text{mL}$, orange line) or ABflo® 488 Rabbit IgG isotype control (A22069, 2 $\mu\text{g}/\text{mL}$, blue line). Non-fluorescently stained cells were used as blank control (red line).



Flow cytometry: 1×10^6 K-562 cells were intracellularly-stained with ABflo® 488 Rabbit IgG isotype control (A22069, 5 $\mu\text{l}/\text{Test}$, left) or ABflo® 488 Rabbit anti-Human CD225/IFITM1 mAb (A22310, 5 $\mu\text{l}/\text{Test}$, right).



Flow cytometry: 1×10^6 U-251MG cells (Low Expression) were intracellularly-stained with ABflo® 488 Rabbit IgG isotype control (A22069, 5 $\mu\text{l}/\text{Test}$, left) or ABflo® 488 Rabbit anti-Human CD225/IFITM1 mAb (A22310, 5 $\mu\text{l}/\text{Test}$, right).



Confocal imaging of K-562 cells using ABflo® 488 Rabbit anti-Human CD225/IFITM1 mAb (A22310, dilution 1:200). DAPI was used for nuclear staining (Blue). Objective: 100x.