

IL-1 alpha Rabbit mAb

Catalog No.: A22766 **Recombinant**

Basic Information

Observed MW

20-25 kDa/31 kDa

Calculated MW

31 kDa

Category

Primary antibody

Applications

WB,IF/ICC,ELISA

Cross-Reactivity

Mouse

CloneNo number

ARC58205

Background

Enables cytokine activity and interleukin-1 receptor binding activity. Involved in positive regulation of angiogenesis and positive regulation of vascular endothelial growth factor production. Acts upstream of or within several processes, including cell surface receptor signaling pathway; connective tissue replacement involved in inflammatory response wound healing; and positive regulation of cytokine production. Located in cytoplasm and extracellular space. Is expressed in several structures, including alimentary system; brain; hemolymphoid system gland; reproductive system; and respiratory system. Human ortholog(s) of this gene implicated in several diseases, including Fabry disease; Schnitzler syndrome; autoimmune disease (multiple); hematologic cancer (multiple); and lung disease (multiple). Orthologous to human IL1A (interleukin 1 alpha).

Recommended Dilutions

WB 1:1000 - 1:10000

IF/ICC 1:200 - 1:400

ELISA Recommended starting concentration is 1 µg/mL. Please optimize the concentration based on your specific assay requirements.

Immunogen Information

Gene ID

16175

Swiss Prot

P01582

Immunogen

Recombinant protein (or fragment). This information is considered to be commercially sensitive.

Synonyms

Il-1a; IL-1 alpha

Contact

☎ | 400-999-6126

✉ | cn.market@abclonal.com.cn

🌐 | www.abclonal.com.cn

Product Information

Source

Rabbit

Isotype

IgG

Purification

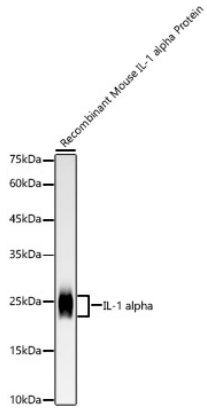
Affinity purification

Storage

Store at -20°C. Avoid freeze / thaw cycles.

Buffer: PBS containing 50% glycerol and 0.05% BSA, preserved with proclin300 or sodium azide (as specified on the Certificate of Analysis), pH 7.3.

Validation Data



Western blot analysis of Recombinant Mouse IL-1 alpha Protein using IL-1 alpha Rabbit mAb (A22766) at 1:10000 dilution.

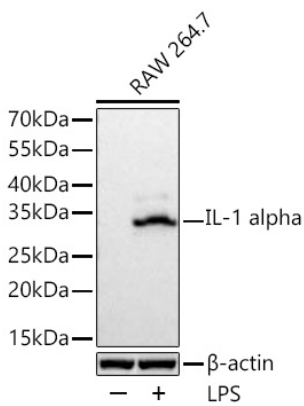
Secondary antibody: HRP-conjugated Goat anti-Rabbit IgG (H+L) (AS014) at 1:10000 dilution.

Lysates/proteins: 10 ng per lane.

Blocking buffer: 3% nonfat dry milk in TBST.

Detection: ECL Basic Kit (RM00020).

Exposure time: 180 s.



Western blot analysis of lysates from RAW 264.7 cells using IL-1 alpha Rabbit mAb (A22766) at 1:1000 dilution incubated at room temperature for 1.5 hours. RAW 264.7 cells were treated with LPS (1 μ g/mL) for 8 hours.

Secondary antibody: HRP-conjugated Goat anti-Rabbit IgG (H+L) (AS014) at 1:10000 dilution.

Lysates/proteins: 30 μ g per lane.

Blocking buffer: 3% nonfat dry milk in TBST.

Detection: ECL Basic Kit (RM00020).

Exposure time: 5 s.