

CD38 Rabbit mAb

Catalog No.: A23037 **Recombinant**

Basic Information

Observed MW

45kDa

Calculated MW

34kDa

Category

Primary antibody

Applications

WB, IF/ICC, FC, ELISA

Cross-Reactivity

Mouse

CloneNo number

ARC59835

Background

This gene encodes a non-lineage-restricted, type II transmembrane glycoprotein that synthesizes and hydrolyzes cyclic adenosine 5'-diphosphate-ribose, an intracellular calcium ion mobilizing messenger. The release of soluble protein and the ability of membrane-bound protein to become internalized indicate both extracellular and intracellular functions for the protein. This protein has an N-terminal cytoplasmic tail, a single membrane-spanning domain, and a C-terminal extracellular region with four N-glycosylation sites. Knockout mice deficient for this gene display altered humoral immune responses. In addition, knockout mice exhibit higher locomotor activity and defects in nurturing and social behaviors.

Recommended Dilutions

WB 1:500 - 1:1000**IF/ICC** 1:50 - 1:200**FC** 1:500 - 1:1000

ELISA Recommended starting concentration is 1 µg/mL. Please optimize the concentration based on your specific assay requirements.

Immunogen Information

Gene ID

12494

Swiss Prot

P56528

Immunogen

Recombinant protein (or fragment). This information is considered to be commercially sensitive.

Synonyms

I-19; ADPRC 1; Cd38-rs1; CD38

Contact

 | 400-999-6126 | cn.market@abclonal.com.cn | www.abclonal.com.cn

Product Information

Source

Rabbit

Isotype

IgG

Purification

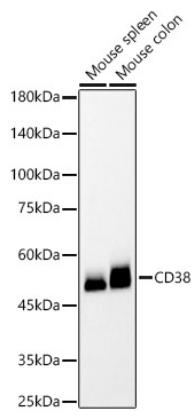
Affinity purification

Storage

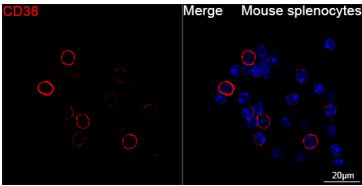
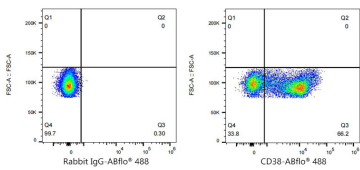
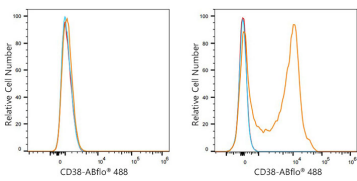
Store at -20°C. Avoid freeze / thaw cycles.

Buffer: PBS containing 50% glycerol and 0.05% BSA, preserved with proclin300 or sodium azide (as specified on the Certificate of Analysis), pH 7.3.

Validation Data



Western blot analysis of various lysates, using CD38 Rabbit mAb (A23037) at 1:1000 dilution. Secondary antibody: HRP-conjugated Goat anti-Rabbit IgG (H+L) (AS014) at 1:10000 dilution. Lysates/proteins: 25µg per lane. Blocking buffer: 3% nonfat dry milk in TBST. Detection: ECL Basic Kit (RM00020). Exposure time: 180s.



Flow cytometry: 1X10⁶ C2C12 cells (negative control, left) and C57/BL6 splenocytes (right) were surface-stained with CD38 Rabbit mAb (A23037, 2 µg/mL, orange line) or ABflo® 488 Rabbit IgG isotype control (A22069, 2 µg/mL, blue line), followed by FITC conjugated goat anti-Rabbit pAb staining. Non-fluorescently stained cells were used as blank control (red line).

Flow cytometry: 1X10⁶ C57/BL6 splenocytes cells were surface-stained with ABflo® 488 Rabbit IgG isotype control (A22069, 2 µg/mL, left) or CD38 Rabbit mAb (A23037, 2 µg/mL, right).

Confocal imaging of Mouse splenocytes cells using CD38 Rabbit mAb (A23037, dilution 1:200) followed by a further incubation with Cy3 Goat Anti-Rabbit IgG (H+L) (AS007, dilution 1:500) (Red). DAPI was used for nuclear staining (Blue). Objective: 100x.