

CACNA1S Rabbit pAb

Catalog No.: A23062

Basic Information

Observed MW

Refer to figures

Calculated MW

212kDa

Category

Primary antibody

Applications

IF-P, ELISA

Cross-Reactivity

Mouse, Rat

Background

This gene encodes one of the five subunits of the slowly inactivating L-type voltage-dependent calcium channel in skeletal muscle cells. Mutations in this gene have been associated with hypokalemic periodic paralysis, thyrotoxic periodic paralysis and malignant hyperthermia susceptibility.

Recommended Dilutions

IF-P 1:50 - 1:200

ELISA Recommended starting concentration is 1 µg/mL. Please optimize the concentration based on your specific assay requirements.

Immunogen Information

Gene ID

779

Swiss Prot

Q13698

Immunogen

Recombinant protein (or fragment). This information is considered to be commercially sensitive.

Synonyms

MHS5; DHPRM; HOKPP; TTPP1; CMYP18; Cav1.1; HOKPP1; hypoPP; CCHL1A3; CACNL1A3; CACNA1S

Contact

☎ | 400-999-6126

✉ | cn.market@abclonal.com.cn

🌐 | www.abclonal.com.cn

Product Information

Source

Rabbit

Isotype

IgG

Purification

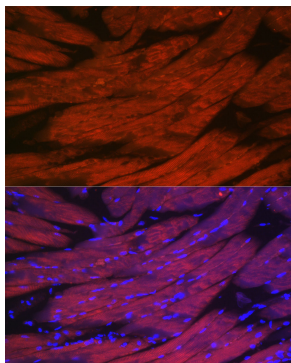
Affinity purification

Storage

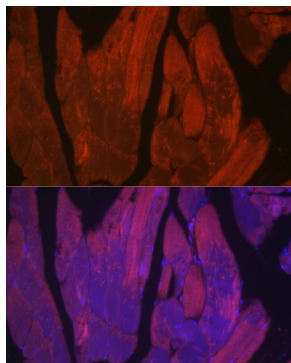
Store at -20°C. Avoid freeze / thaw cycles.

Buffer: PBS with 0.05% proclin300, 50% glycerol, pH7.3.

Validation Data



Immunofluorescence analysis of paraffin-embedded mouse skeletal muscle using CACNA1S Rabbit pAb (A23062) at dilution of 1:50 (40x lens). Secondary antibody: Cy3-conjugated Goat anti-Rabbit IgG (H+L) (AS007) at 1:500 dilution. Blue: DAPI for nuclear staining.



Immunofluorescence analysis of paraffin-embedded rat skeletal muscle using CACNA1S Rabbit pAb (A23062) at dilution of 1:50 (40x lens). Secondary antibody: Cy3-conjugated Goat anti-Rabbit IgG (H+L) (AS007) at 1:500 dilution. Blue: DAPI for nuclear staining.