

ABflo® 488 Rabbit anti-Human/Monkey Ki67 mAb

Catalog No.: A23407

Basic Information

Observed MW

Refer to figures

Calculated MW

319kDa/359kDa

Category

Primary antibody

Applications

FC (intra)

Cross-Reactivity

Human, Cynomolgus

CloneNo number

ARC57564

Conjugate

ABflo® 488. Ex:491nm. Em:516nm.

Recommended Dilutions

FC (intra) 5 µl per 10⁶ cells in
100 µl volume

Background

Enables protein C-terminus binding activity. Involved in regulation of chromosome segregation and regulation of mitotic nuclear division. Located in chromosome; nuclear body; and nucleolus. Colocalizes with condensed chromosome. Implicated in Crohn's disease; breast cancer; human immunodeficiency virus infectious disease; and pancreatic cancer. Biomarker of several diseases, including Barrett's esophagus; autoimmune disease of musculoskeletal system (multiple); endocrine gland cancer (multiple); gastrointestinal system cancer (multiple); and interstitial cystitis.

Immunogen Information

Gene ID

4288

Swiss Prot

P46013

Immunogen

Synthetic peptide. This information is considered to be commercially sensitive.

Synonyms

KIA; MIB-; MIB-1; PPP1R105

Contact

 | 400-999-6126

 | cn.market@abclonal.com.cn

 | www.abclonal.com.cn

Product Information

Source

Rabbit

Isotype

IgG

Purification

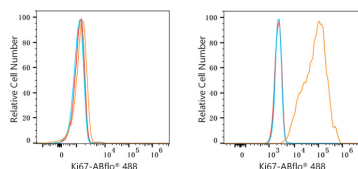
Affinity purification

Storage

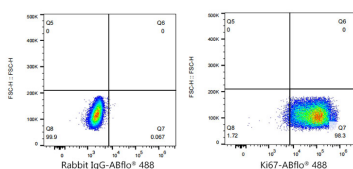
Store at 2-8°C. Avoid freeze.

Buffer: PBS containing 0.2% BSA, preserved with proclin300 or sodium azide (as specified on the Certificate of Analysis), pH 7.3.

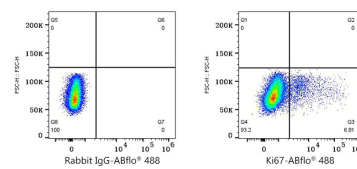
Validation Data



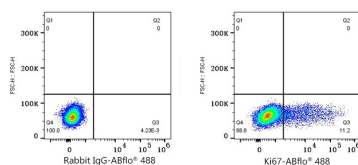
Flow cytometry: 1×10^6 knockout (KO) HeLa cells (negative control, left) and HeLa cells (right) were intracellularly-stained with ABflo® 488 Rabbit anti-Human/Monkey Ki67 mAb (A23407, 5 µl/Test, orange line) or ABflo® 488 Rabbit IgG isotype control (A22069, 5 µl/Test, blue line). Non-fluorescently stained cells were used as blank control (red line).



Flow cytometry: 1×10^6 HeLa cells were intracellularly-stained with ABflo® 488 Rabbit IgG isotype control (A22069, 5 µl/Test, left) or ABflo® 488 Rabbit anti-Human/Monkey Ki67 mAb (A23407, 5 µl/Test, right).



Flow cytometry: 1×10^6 Human PBMC were surface-stained with ABflo® 488 Rabbit IgG isotype control (A22069, 5 µl/Test, left) or ABflo® 488 Rabbit anti-Human/Monkey Ki67 mAb (A23407, 5 µl/Test, right). Cells in the lymphocyte gate were used for analysis.



Flow cytometry: 1×10^6 Cynomolgus PBMC were surface-stained with ABflo® 488 Rabbit IgG isotype control (A22069, 5 µl/Test, left) or ABflo® 488 Rabbit anti-Human/Monkey Ki67 mAb (A23407, 5 µl/Test, right). Cells in the lymphocyte gate were used for analysis.