

EGFR Rabbit mAb

Catalog No.: A23764 **Recombinant**

Basic Information

Observed MW

175kDa

Calculated MW

44kDa/69kDa/77kDa/134kDa

Category

Primary antibody

Applications

WB, IHC-P, ELISA

Cross-Reactivity

Human

CloneNo number

ARC61438

Background

The protein encoded by this gene is a transmembrane glycoprotein that is a member of the protein kinase superfamily. This protein is a receptor for members of the epidermal growth factor family. EGFR is a cell surface protein that binds to epidermal growth factor. Binding of the protein to a ligand induces receptor dimerization and tyrosine autophosphorylation and leads to cell proliferation. Mutations in this gene are associated with lung cancer.

Recommended Dilutions

WB 1:1000 - 1:10000**IHC-P** 1:50 - 1:200

ELISA Recommended starting concentration is 1 µg/mL. Please optimize the concentration based on your specific assay requirements.

Immunogen Information

Gene ID

1956

Swiss Prot

P00533

Immunogen

Recombinant protein (or fragment). This information is considered to be commercially sensitive.

Synonyms

EGFR; ERBB; ERBB1; HER1; NISBD2; PIG61; mENA; epidermal growth factor receptor

Contact

 | 400-999-6126 | cn.market@abclonal.com.cn | www.abclonal.com.cn

Product Information

Source

Rabbit

Isotype

IgG

Purification

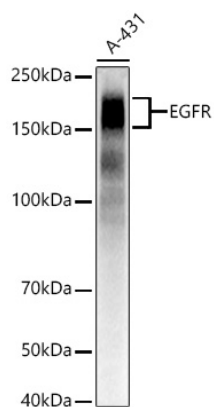
Affinity purification

Storage

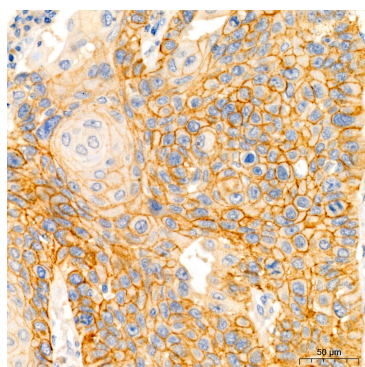
Store at -20°C. Avoid freeze / thaw cycles.

Buffer: PBS containing 50% glycerol and 0.05% BSA, preserved with proclin300 or sodium azide (as specified on the Certificate of Analysis), pH 7.3.

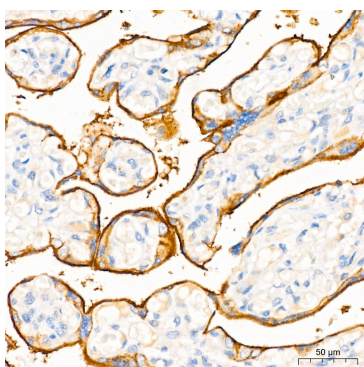
Validation Data



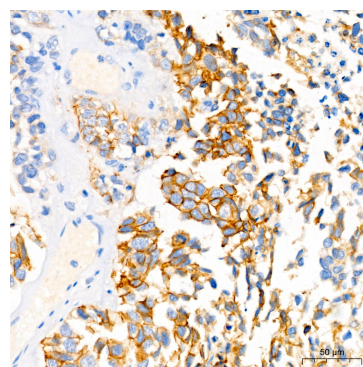
Western blot analysis of lysates from A-431 cells, using EGFR Rabbit mAb (A23764) at 1:1000 dilution. Secondary antibody: HRP-conjugated Goat anti-Rabbit IgG (H+L) (AS014) at 1:10000 dilution. Lysates/proteins: 25µg per lane. Blocking buffer: 3% nonfat dry milk in TBST. Detection: ECL Basic Kit (RM00020). Exposure time: 0.5s.



Immunohistochemistry analysis of paraffin-embedded Human lung squamous carcinoma tissue using EGFR Rabbit mAb (A23764) at dilution of 1:50 (40x lens). High pressure antigen retrieval performed with 0.01M Tris/EDTA Buffer (pH 9.0) prior to IHC staining.



Immunohistochemistry analysis of paraffin-embedded Human placenta using EGFR Rabbit mAb (A23764) at dilution of 1:50 (40x lens). High pressure antigen retrieval performed with 0.01M Tris/EDTA Buffer (pH 9.0) prior to IHC staining.



Immunohistochemistry analysis of paraffin-embedded Human urothelial carcinoma using EGFR Rabbit mAb (A23764) at dilution of 1:50 (40x lens). High pressure antigen retrieval performed with 0.01M Tris/EDTA Buffer (pH 9.0) prior to IHC staining.