

# JAM-A/CD321/F11R Rabbit PolymAb®

Catalog No.: A23909PM

## Basic Information

### Observed MW

40kDa

### Calculated MW

32kDa

### Category

Primary antibody

### Applications

WB, IF/ICC, ELISA

### Cross-Reactivity

Human, Mouse, Rat

## Background

Predicted to enable PDZ domain binding activity; integrin binding activity; and protein homodimerization activity. Involved in intestinal absorption; regulation of cytokine production; and regulation of membrane permeability. Acts upstream of or within cell adhesion and epithelial cell differentiation. Located in bicellular tight junction. Is expressed in several structures, including 4-8 cell stage embryo; alimentary system; respiratory system; sensory organ; and urinary system. Human ortholog(s) of this gene implicated in hypertension. Orthologous to human F11R (F11 receptor).

## Recommended Dilutions

**WB** 1:5500 - 1:11000

**IF/ICC** 1:100 - 1:400

**ELISA** Recommended starting concentration is 1 µg/mL. Please optimize the concentration based on your specific assay requirements.

## Immunogen Information

### Gene ID

50848/16456

### Swiss Prot

Q9Y624/O88792

### Immunogen

Recombinant protein (or fragment). This information is considered to be commercially sensitive.

### Synonyms

JAM; Jcam; JAM-1; JAM-A; Jcam1; Ly106; ESTM33; 9130004G24; JAM-A/CD321

## Contact

☎ | 400-999-6126

✉ | [cn.market@abclonal.com.cn](mailto:cn.market@abclonal.com.cn)

🌐 | [www.abclonal.com.cn](http://www.abclonal.com.cn)

## Product Information

### Source

Rabbit

### Isotype

IgG

### Purification

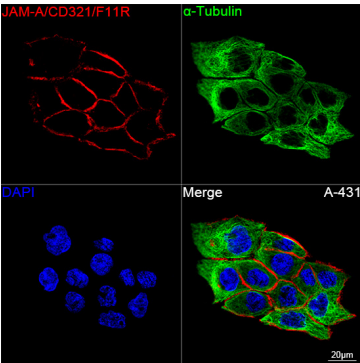
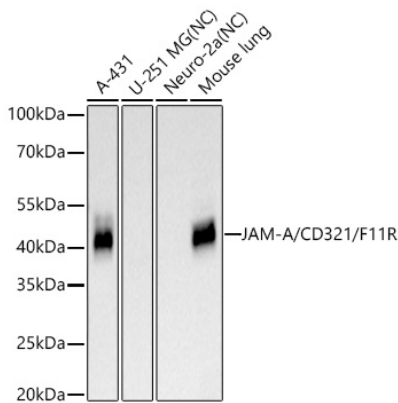
Affinity purification

### Storage

Store at -20°C. Avoid freeze / thaw cycles.

Buffer: PBS containing 50% glycerol and 0.05% BSA, preserved with proclin300 or sodium azide (as specified on the Certificate of Analysis), pH 7.3.

Validation Data



Confocal imaging of A-431 cells using JAM-A/CD321/F11R Rabbit PolymAb® (A23909PM, dilution 1:200) followed by a further incubation with Cy3 Goat Anti-Rabbit IgG (H+L) (AS007, dilution 1:500) (Red). The cells were counterstained with α-Tubulin Mouse mAb (AC012, dilution 1:400) followed by incubation with ABflo® 488-conjugated Goat Anti-Mouse IgG (H+L) Ab (AS076, dilution 1:500) (Green). DAPI was used for nuclear staining (Blue). Objective: 100x.