

# RAB5A Rabbit mAb

Catalog No.: A23955 **Recombinant**

## Basic Information

### Observed MW

24kDa

### Calculated MW

22kDa/23kDa

### Category

Primary antibody

### Applications

WB, IHC-P, ELISA

### Cross-Reactivity

Human, Mouse, Rat

### CloneNo number

ARC62486

## Background

RAB5A (RAB5A, member RAS oncogene family) is a protein-coding gene. Diseases associated with RAB5A include borna disease, and venezuelan equine encephalitis. GO annotations related to this gene include GDP binding and GTP binding. An important paralog of this gene is RAB20.

## Recommended Dilutions

**WB** 1:1000 - 1:6000

**IHC-P** 1:200 - 1:2000

**ELISA** Recommended starting concentration is 1 µg/mL. Please optimize the concentration based on your specific assay requirements.

## Immunogen Information

### Gene ID

5868

### Swiss Prot

P20339

### Immunogen

Synthetic peptide. This information is considered to be commercially sensitive.

### Synonyms

RAB5A; RAB5; ras-related protein Rab-5A

## Contact

 | 400-999-6126

 | [cn.market@abclonal.com.cn](mailto:cn.market@abclonal.com.cn)

 | [www.abclonal.com.cn](http://www.abclonal.com.cn)

## Product Information

### Source

Rabbit

### Isotype

IgG

### Purification

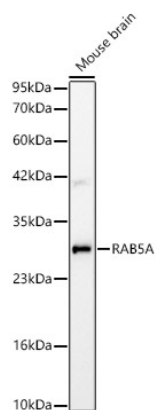
Affinity purification

### Storage

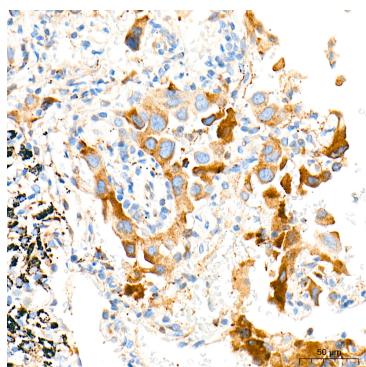
Store at -20°C. Avoid freeze / thaw cycles.

Buffer: PBS containing 50% glycerol and 0.05% BSA, preserved with proclin300 or sodium azide (as specified on the Certificate of Analysis), pH 7.3.

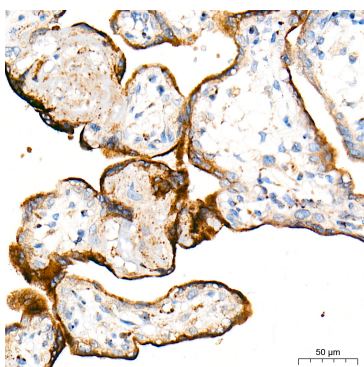
## Validation Data



Western blot analysis of lysates from Mouse brain, using RAB5A Rabbit mAb (A23955) at 1:1000 dilution.  
Secondary antibody: HRP-conjugated Goat anti-Rabbit IgG (H+L) (AS014) at 1:10000 dilution.  
Lysates/proteins: 25µg per lane.  
Blocking buffer: 3% nonfat dry milk in TBST.  
Detection: ECL Basic Kit (RM00020).  
Exposure time: 10s.



Immunohistochemistry analysis of paraffin-embedded Human lung cancer tissue using RAB5A Rabbit mAb (A23955) at a dilution of 1:1000 (40x lens). High pressure antigen retrieval performed with 0.01M Tris-EDTA Buffer (pH 9.0) prior to IHC staining.



Immunohistochemistry analysis of paraffin-embedded Human placenta tissue using RAB5A Rabbit mAb (A23955) at a dilution of 1:1000 (40x lens). High pressure antigen retrieval performed with 0.01M Tris-EDTA Buffer (pH 9.0) prior to IHC staining.