

ABflo® 488 Rabbit anti-Human CD300c mAb

Catalog No.: A24097

Basic Information

Observed MW

Calculated MW
25kDa

Category
Primary antibody

Applications
IF/ICC,FC

Cross-Reactivity
Human

CloneNo number
ARC64148

Conjugate
ABflo® 488. Ex:491nm. Em:516nm.

Background

The CMRF35 antigen, which was identified by reactivity with a monoclonal antibody, is present on monocytes, neutrophils, and some T and B lymphocytes (Jackson et al., 1992 [PubMed 1349532]).

Recommended Dilutions

IF/ICC	1:50 - 1:200
FC	5 µl per 10 ⁶ cells in 100 µl volume

Immunogen Information

Gene ID	Swiss Prot
10871	Q08708

Immunogen

Recombinant protein (or fragment). This information is considered to be commercially sensitive.

Synonyms

LIR; CLM-6; CMRF35; IGSF16; CMRF-35; CMRF35A; CMRF-35A; CMRF35A1; CMRF35-A1

Contact

	400-999-6126
	cn.market@abclonal.com.cn
	www.abclonal.com.cn

Product Information

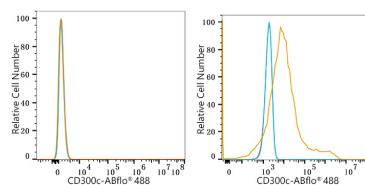
Source	Isotype	Purification
Rabbit	IgG	Affinity purification

Storage

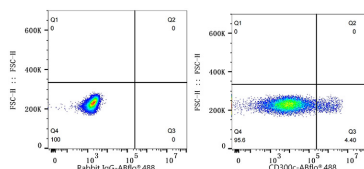
Store at 2-8°C. Avoid freeze.

Buffer: PBS containing 0.2% BSA, preserved with proclin300 or sodium azide (as specified on the Certificate of Analysis), pH 7.3.

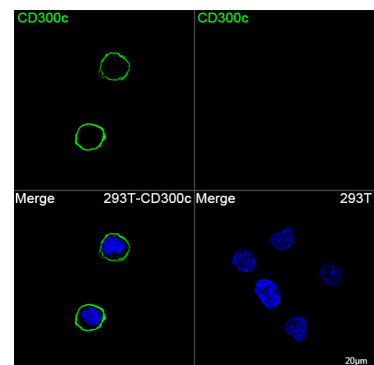
Validation Data



Flow cytometry: 1×10^6 293F cells (negative control, left) and 293F (Transfection, right) cells were surface-stained with ABflo® 488 Rabbit anti-Human CD300c mAb (A24097, 5 μ l/Test, orange line) or ABflo® 488 Rabbit IgG isotype control (A22069, 5 μ l/Test, blue line). Non-fluorescently stained cells were used as blank control (red line).



Flow cytometry: 1×10^6 293F (Transfection) cells were surface-stained with ABflo® 488 Rabbit IgG isotype control (A22069, 5 μ l/Test, left) or ABflo® 488 Rabbit anti-Human CD300c mAb (A24097, 5 μ l/Test, right).



Confocal imaging of 293T cells transfected with CD300c using ABflo® 488 Rabbit anti-Human CD300c mAb (A24097, dilution 1:200). DAPI was used for nuclear staining (Blue). Objective: 100x.