

PE Rabbit anti-Human CD62L/L-Selectin mAb

Catalog No.: A24249

Basic Information

Observed MW

Refer to figures

Calculated MW

42kDa/43kDa

Category

Primary antibody

Applications

FC

Cross-Reactivity

Human

CloneNo number

ARC60035

Conjugate

PE. Ex:565nm. Em:574nm.

Recommended Dilutions

FC 5 μ l per 10^6 cells in
100 μ l volume

Background

This gene encodes a cell surface adhesion molecule that belongs to a family of adhesion/homing receptors. The encoded protein contains a C-type lectin-like domain, a calcium-binding epidermal growth factor-like domain, and two short complement-like repeats. The gene product is required for binding and subsequent rolling of leucocytes on endothelial cells, facilitating their migration into secondary lymphoid organs and inflammation sites. Single-nucleotide polymorphisms in this gene have been associated with various diseases including immunoglobulin A nephropathy. Alternatively spliced transcript variants have been found for this gene.

Immunogen Information

Gene ID

6402

Swiss Prot

P14151

Immunogen

Recombinant protein (or fragment). This information is considered to be commercially sensitive.

Synonyms

SELL; CD62L; LAM1; LECAM1; LEU8; LNHR; LSEL; LYAM1; PLNHR; TQ1; L-selectin

Contact

☎ | 400-999-6126

✉ | cn.market@abclonal.com.cn

🌐 | www.abclonal.com.cn

Product Information

Source

Rabbit

Isotype

IgG

Purification

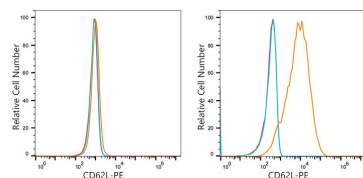
Affinity purification

Storage

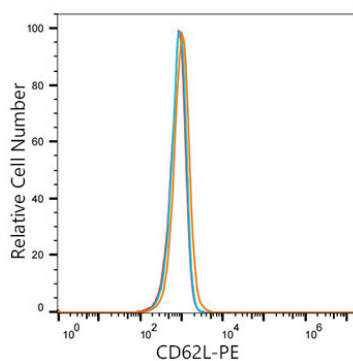
Store at 2-8°C. Avoid freeze.

Buffer: PBS containing 0.2% BSA, preserved with proclin300 or sodium azide (as specified on the Certificate of Analysis), pH 7.3.

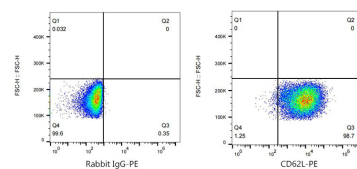
Validation Data



Flow cytometry: 1×10^6 T-47D cells(negative control,left) and MOLT-4 cells(right) were surface-stained with PE Rabbit anti-Human CD62L/L-Selectin mAb(A24249, 5 µl/Test,orange line) or PE Rabbit IgG isotype control (5 µl/Test,blue line).Non-fluorescently stained cells were used as blank control (red line).



Flow cytometry: 1×10^6 T-47D cells(negative control) were surface-stained with PE Rabbit anti-Human CD62L/L-Selectin mAb(A24249, 5 µl/Test,orange line) or PE Rabbit IgG isotype control (5 µl/Test,blue line).Non-fluorescently stained T-47D cells were used as blank control (red line).



Flow cytometry: 1×10^6 MOLT-4 cells were surface-stained with PE Rabbit IgG isotype control (5 µl/Test,left) or PE Rabbit anti-Human CD62L/L-Selectin mAb(A24249, 5 µl/Test,right).