

# CDK5R1 Rabbit mAb

Catalog No.: A24395 **Recombinant**

## Basic Information

**Observed MW**

25kDa

**Calculated MW**

34kDa

**Category**

Primary antibody

**Applications**

WB, IF/ICC, IF-P, ELISA

**Cross-Reactivity**

Human, Mouse, Rat

**CloneNo number**

ARC62869

## Background

The protein encoded by this gene (p35) is a neuron-specific activator of cyclin-dependent kinase 5 (CDK5); the activation of CDK5 is required for proper development of the central nervous system. The p35 form of this protein is proteolytically cleaved by calpain, generating a p25 form. The cleavage of p35 into p25 results in relocalization of the protein from the cell periphery to nuclear and perinuclear regions. P25 deregulates CDK5 activity by prolonging its activation and changing its cellular location. The p25 form accumulates in the brain neurons of patients with Alzheimer's disease. This accumulation correlates with an increase in CDK5 kinase activity, and may lead to aberrantly phosphorylated forms of the microtubule-associated protein tau, which contributes to Alzheimer's disease.

## Recommended Dilutions

**WB** 1:2000 - 1:8000**IF/ICC** 1:200 - 1:800**IF-P** 1:200 - 1:800

**ELISA** Recommended starting concentration is 1 µg/mL. Please optimize the concentration based on your specific assay requirements.

## Immunogen Information

**Gene ID**

8851

**Swiss Prot**

Q15078

**Immunogen**

Synthetic peptide. This information is considered to be commercially sensitive.

**Synonyms**

p23; p25; p35; CDK5R; NCK5A; CDK5P35; p35nck5a; CDK5R1

## Contact

 | 400-999-6126 | [cn.market@abclonal.com.cn](mailto:cn.market@abclonal.com.cn) | [www.abclonal.com.cn](http://www.abclonal.com.cn)

## Product Information

**Source**

Rabbit

**Isotype**

IgG

**Purification**

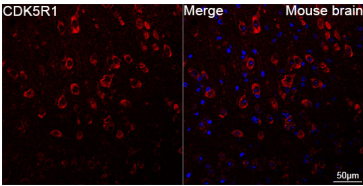
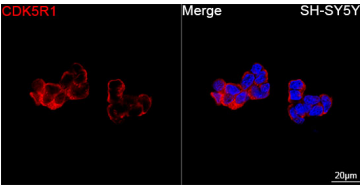
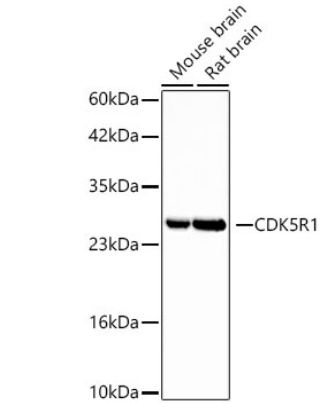
Affinity purification

**Storage**

Store at -20°C. Avoid freeze / thaw cycles.

Buffer: PBS containing 50% glycerol and 0.05% BSA, preserved with proclin300 or sodium azide (as specified on the Certificate of Analysis), pH 7.3.

Validation Data



Confocal imaging of SH-SY5Y cells using CDK5R1 Rabbit mAb (A24395, dilution 1:200) followed by a further incubation with Cy3 Goat Anti-Rabbit IgG (H+L) (AS007, dilution 1:500) (Red). DAPI was used for nuclear staining (Blue). Objective: 100x.

Confocal imaging of paraffin-embedded Mouse brain tissue using CDK5R1 Rabbit mAb (A24395, dilution 1:200) followed by a further incubation with Cy3 Goat Anti-Rabbit IgG (H+L) (AS007, dilution 1:500) (Red). DAPI was used for nuclear staining (Blue). High pressure antigen retrieval performed with 0.01M Citrate Buffer (pH 6.0) prior to IF staining. Objective: 40x.