

DYRK2 Rabbit pAb

Catalog No.: A24467

Basic Information

Observed MW

66kDa

Calculated MW

59kDa/66kDa

Category

Primary antibody

Applications

WB, IHC-P, ELISA

Cross-Reactivity

Human, Rat

Background

DYRK2 belongs to a family of protein kinases whose members are presumed to be involved in cellular growth and/or development. The family is defined by structural similarity of their kinase domains and their capability to autophosphorylate on tyrosine residues. DYRK2 has demonstrated tyrosine autophosphorylation and catalyzed phosphorylation of histones H3 and H2B in vitro. Two isoforms of DYRK2 have been isolated. The predominant isoform, isoform 1, lacks a 5' terminal insert.

Recommended Dilutions

WB 1:500 - 1:1000

IHC-P 1:50 - 1:200

ELISA Recommended starting concentration is 1 µg/mL. Please optimize the concentration based on your specific assay requirements.

Immunogen Information

Gene ID

8445

Swiss Prot

Q92630

Immunogen

Synthetic peptide. This information is considered to be commercially sensitive.

Synonyms

DYRK2; dual specificity tyrosine-phosphorylation-regulated kinase 2

Contact

☎ | 400-999-6126

✉ | cn.market@abclonal.com.cn

🌐 | www.abclonal.com.cn

Product Information

Source

Rabbit

Isotype

IgG

Purification

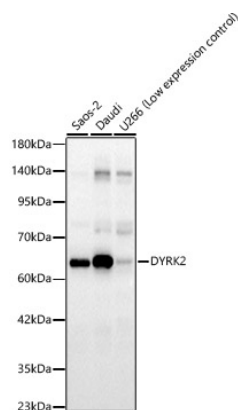
Affinity purification

Storage

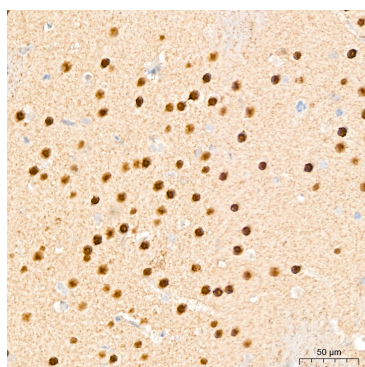
Store at -20°C. Avoid freeze / thaw cycles.

Buffer: PBS containing 50% glycerol, preserved with proclin300 or sodium azide (as specified on the Certificate of Analysis), pH 7.3.

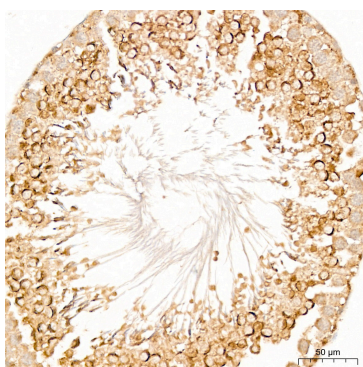
Validation Data



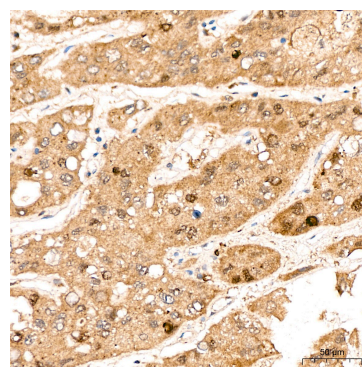
Western blot analysis of various lysates, using DYRK2 Rabbit pAb (A24467) at 1:700 dilution. Secondary antibody: HRP-conjugated Goat anti-Rabbit IgG (H+L) (AS014) at 1:10000 dilution. Lysates/proteins: 25µg per lane. Blocking buffer: 3% nonfat dry milk in TBST. Detection: ECL Basic Kit (RM00020). Exposure time: 60s.



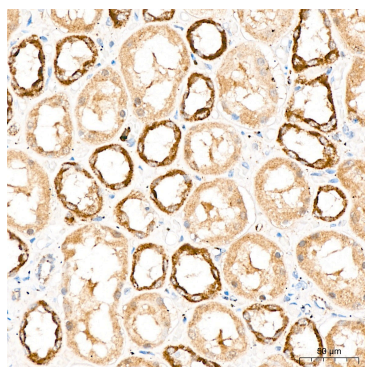
Immunohistochemistry analysis of paraffin-embedded Rat brain tissue using DYRK2 Rabbit pAb (A24467) at a dilution of 1:200 (40x lens). High pressure antigen retrieval was performed with 0.01M Citrate Buffer (pH 6.0) prior to IHC staining.



Immunohistochemistry analysis of paraffin-embedded Rat testis tissue using DYRK2 Rabbit pAb (A24467) at a dilution of 1:200 (40x lens). High pressure antigen retrieval was performed with 0.01M Citrate Buffer (pH 6.0) prior to IHC staining.



Immunohistochemistry analysis of paraffin-embedded Human liver cancer tissue using DYRK2 Rabbit pAb (A24467) at a dilution of 1:200 (40x lens). High pressure antigen retrieval was performed with 0.01M Citrate Buffer (pH 6.0) prior to IHC staining.



Immunohistochemistry analysis of paraffin-embedded Human kidney tissue using DYRK2 Rabbit pAb (A24467) at a dilution of 1:200 (40x lens). High pressure antigen retrieval was performed with 0.01M Citrate Buffer (pH 6.0) prior to IHC staining.