

NLRP3 Rabbit pAb

Catalog No.: A24833

1 Publications

Basic Information

Observed MW

118kDa/110kDa

Calculated MW

83kDa/105kDa/111kDa/112kDa/115kDa/
118kDa

Category

Primary antibody

Applications

WB, IF-P

Cross-Reactivity

Human, Mouse

Background

This gene encodes a pyrin-like protein containing a pyrin domain, a nucleotide-binding site (NBS) domain, and a leucine-rich repeat (LRR) motif. This protein interacts with the apoptosis-associated speck-like protein PYCARD/ASC, which contains a caspase recruitment domain, and is a member of the NALP3 inflammasome complex. This complex functions as an upstream activator of NF-kappaB signaling, and it plays a role in the regulation of inflammation, the immune response, and apoptosis. Mutations in this gene are associated with familial cold autoinflammatory syndrome (FCAS), Muckle-Wells syndrome (MWS), chronic infantile neurological cutaneous and articular (CINCA) syndrome, and neonatal-onset multisystem inflammatory disease (NOMID). Multiple alternatively spliced transcript variants encoding distinct isoforms have been identified for this gene. Alternative 5' UTR structures are suggested by available data; however, insufficient evidence is available to determine if all of the represented 5' UTR splice patterns

Recommended Dilutions

WB 1:1000 - 1:5000

IF-P 1:50 - 1:200

Immunogen Information

Gene ID

114548

Swiss Prot

Q96P20

Immunogen

Synthetic peptide. This information is considered to be commercially sensitive.

Synonyms

NLRP3; AGTAVPRL; AII; AVP; C1orf7; CIAS1; CLR1.1; FCAS; FCAS1; FCU; MWS; NALP3; PYPAF1; NLR family pyrin domain containing 3

Contact

 | 400-999-6126 | cn.market@abclonal.com.cn | www.abclonal.com.cn

Product Information

Source

Rabbit

Isotype

IgG

Purification

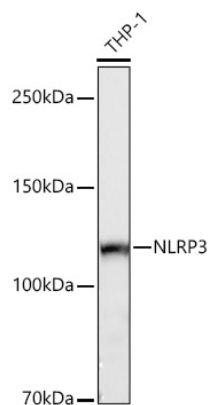
Affinity purification

Storage

Store at -20°C. Avoid freeze / thaw cycles.

Buffer: PBS with 0.05% proclin300, 50% glycerol, pH7.3.

Validation Data



Western blot analysis of lysates from THP-1 cells using NLRP3 Rabbit pAb (A24833) at 1:10000 dilution incubated overnight at 4°C.

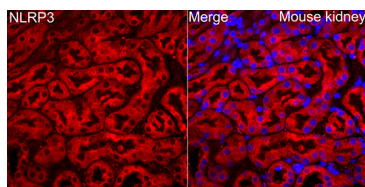
Secondary antibody: HRP-conjugated Goat anti-Rabbit IgG (H+L) (AS014) at 1:10000 dilution.

Lysates/proteins: 25 µg per lane.

Blocking buffer: 3% nonfat dry milk in TBST.

Detection: ECL Basic Kit (RM00020).

Exposure time: 90s.



Immunofluorescence analysis of paraffin-embedded mouse kidney using NLRP3 Rabbit pAb (A24833) at dilution of 1:200 (40x lens).
Secondary antibody: Cy3-conjugated Goat anti-Rabbit IgG (H+L) (AS007) at 1:500 dilution. Blue: DAPI for nuclear staining.