

ROR1 Rabbit mAb

Catalog No.: A24888 **Recombinant**

Basic Information

Observed MW

Calculated MW
104kDa

Category
Primary antibody

Applications
FC

Cross-Reactivity
Human

CloneNo number
ARC63587

Background

This gene encodes a receptor tyrosine kinase-like orphan receptor that modulates neurite growth in the central nervous system. The encoded protein is a glycosylated type I membrane protein that belongs to the ROR subfamily of cell surface receptors. It is a pseudokinase that lacks catalytic activity and may interact with the non-canonical Wnt signalling pathway. This gene is highly expressed during early embryonic development but expressed at very low levels in adult tissues. Increased expression of this gene is associated with B-cell chronic lymphocytic leukaemia. Alternative splicing results in multiple transcript variants encoding different isoforms.

Recommended Dilutions

FC 1:500 - 1:1000

Immunogen Information

Gene ID 4919	Swiss Prot Q01973
------------------------	-----------------------------

Immunogen

Recombinant protein (or fragment). This information is considered to be commercially sensitive.

Synonyms

NTRKR1; dj537F10.1; ROR1

Contact

☎		400-999-6126
✉		cn.market@abclonal.com.cn
🌐		www.abclonal.com.cn

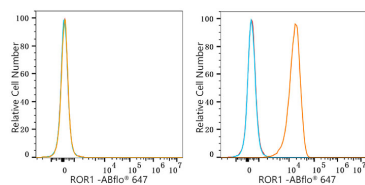
Product Information

Source Rabbit	Isotype IgG	Purification Affinity purification
-------------------------	-----------------------	--

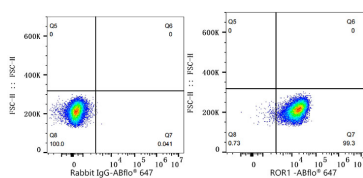
Storage

Store at -20°C. Avoid freeze / thaw cycles.
Buffer: PBS containing 50% glycerol and 0.05% BSA, preserved with proclin300 or sodium azide (as specified on the Certificate of Analysis), pH 7.3.

Validation Data



Flow cytometry: 1X10⁶ HEL cells (negative control, left) and MDA-MB-231 cells (right) were surface-stained with ROR1 Rabbit mAb (A24888, 2 µg/mL, orange line) or ABflo® 647 Rabbit IgG isotype control (A22070, 5 µL/Test, blue line), followed by Alexa Fluor® 647 conjugated goat anti-rabbit pAb staining. Non-fluorescently stained cells were used as blank control (red line).



Flow cytometry: 1X10⁶ MDA-MB-231 cells were surface-stained with ABflo® 647 Rabbit IgG isotype control (A22070, 5 µL/Test, left) or ROR1 Rabbit mAb (A24888, 2 µg/mL, right).