

pro Caspase-1 + p10 + p12 Rabbit mAb

Catalog No.: A25308

Recombinant

4 Publications

Basic Information

Observed MW

12 kDa/30-45 kDa

Calculated MW

45kDa

Category

Primary antibody

Applications

WB,IP,ELISA

Cross-Reactivity

Human, Mouse, Rat

CloneNo number

ARC3243

Background

This gene encodes a protein which is a member of the cysteine-aspartic acid protease (caspase) family. Sequential activation of caspases plays a central role in the execution-phase of cell apoptosis. Caspases exist as inactive proenzymes which undergo proteolytic processing at conserved aspartic residues to produce 2 subunits, large and small, that dimerize to form the active enzyme. This gene was identified by its ability to proteolytically cleave and activate the inactive precursor of interleukin-1, a cytokine involved in the processes such as inflammation, septic shock, and wound healing. This gene has been shown to induce cell apoptosis and may function in various developmental stages. Studies of a similar gene in mouse suggest a role in the pathogenesis of Huntington disease. Alternative splicing results in transcript variants encoding distinct isoforms.

Recommended Dilutions

WB 1:500 - 1:2000**IP** 0.5µg-4µg antibody for
200µg-400µg extracts of
whole cells**ELISA** Recommended starting
concentration is 1 µg/mL.
Please optimize the
concentration based on
your specific assay
requirements.

Immunogen Information

Gene ID

834

Swiss Prot

P29466

Immunogen

Recombinant protein (or fragment). This information is considered to be commercially sensitive.

Synonyms

ICE; P45; IL1BC; Cleaved-Caspase-1

Contact

 | 400-999-6126 | cn.market@abclonal.com.cn | www.abclonal.com.cn

Product Information

Source

Rabbit

Isotype

IgG

Purification

Affinity purification

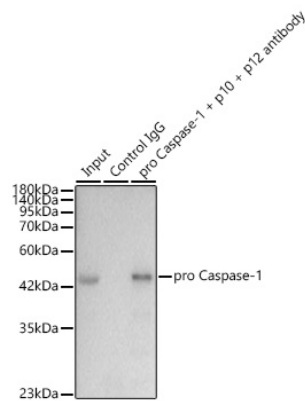
Storage

Store at -20°C. Avoid freeze / thaw cycles.

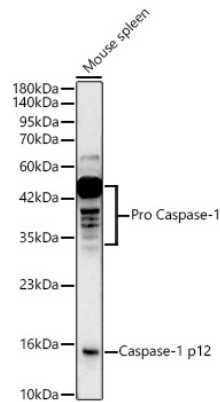
Buffer: PBS containing 50% glycerol and 0.05% BSA, preserved with proclin300 or sodium azide (as specified on the Certificate of Analysis), pH 7.3.

Validation Data

Immunoprecrecipitation of pro Caspase-1 in 300 µg extracts from RAW 264.7 cells using 3 µg pro Caspase-1 + p10 + p12 Rabbit mAb (A25308). Western blot analysis was performed using pro Caspase-1 + p10 + p12 Rabbit mAb (A25308) at 1:1000 dilution.



Western blot analysis of lysates from Mouse spleen using pro Caspase-1 + p10 + p12 Rabbit mAb (A25308) at 1:2000 dilution.
Secondary antibody: HRP-conjugated Goat anti-Rabbit IgG (H+L) (AS014) at 1:10000 dilution.
Lysates/proteins: 25 µg per lane.
Blocking buffer: 3% nonfat dry milk in TBST.
Detection: ECL Basic Kit (RM00020).
Exposure time:90s.



Western blot analysis of lysates from THP-1 cells using pro Caspase-1 + p10 + p12 Rabbit mAb (A25308) at 1:2000 dilution incubated overnight at 4°C. THP-1 cells were treated with TPA (80 nM) at 37°C for overnight and LPS (1 µg/mL) at 37°C for 6 hours.
Secondary antibody: HRP-conjugated Goat anti-Rabbit IgG (H+L) (AS014) at 1:10000 dilution.
Lysates/proteins: 30 µg per lane.
Blocking buffer: 3 % nonfat dry milk in TBST.
Detection: ECL Basic Kit (RM00020).
Exposure time: 30s.

