

ABflo® 647 Rabbit anti-Human FATP1 mAb

Catalog No.: A25571

Basic Information

Observed MW

Calculated MW

52kDa/71kDa

Category

Primary antibody

Applications

FC (intra)

Cross-Reactivity

Human

CloneNo number

ARC66918

Conjugate

ABflo® 647. Ex:648nm. Em:664nm.

Background

Enables biotin transmembrane transporter activity; efflux transmembrane transporter activity; and long-chain fatty acid transporter activity. Involved in several processes, including carboxylic acid transmembrane transport; glycerophospholipid biosynthetic process; and lipid transport across blood-brain barrier. Located in membrane. Part of plasma membrane.

Recommended Dilutions

FC (intra) 5 µl per 10⁶ cells in
 100 µl volume

Immunogen Information

Gene ID

376497

Swiss Prot

Q6PCB7

Immunogen

Recombinant protein (or fragment). This information is considered to be commercially sensitive.

Synonyms

FATP; FATP1; ACSVL5; FATP-1

Contact

 | 400-999-6126

 | cn.market@abclonal.com.cn

 | www.abclonal.com.cn

Product Information

Source

Rabbit

Isotype

IgG

Purification

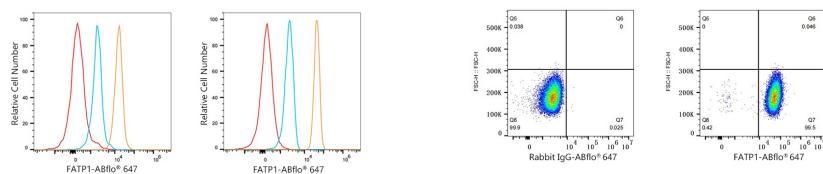
Affinity purification

Storage

Store at 2-8°C. Avoid freeze.

Buffer: PBS containing 0.2% BSA, preserved with proclin300 or sodium azide (as specified on the Certificate of Analysis), pH 7.3.

Validation Data



Flow cytometry: 1×10^6 NTERA-2 cells (Low Expression, left) and SK-MEL-28 cells (right) were intracellularly-stained with ABflo® 647 Rabbit anti-Human FATP1 mAb (A25571, 5 μ l/Test, orange line) or ABflo® 647 Rabbit IgG isotype control (A22070, 5 μ l/Test, blue line). Non-fluorescently stained cells were used as blank control (red line).

Flow cytometry: 1×10^6 SK-MEL-28 cells were intracellularly-stained with ABflo® 647 Rabbit IgG isotype control (A22070, 5 μ l/Test, left) or ABflo® 647 Rabbit anti-Human FATP1 mAb (A25571, 5 μ l/Test, right).