

STK4 Rabbit pAb

Catalog No.: A25851

Basic Information

Observed MW

60kDa

Calculated MW

56kDa

Category

Primary antibody

Applications

IP, ELISA

Cross-Reactivity

Human

Background

The protein encoded by this gene is a cytoplasmic kinase that is structurally similar to the yeast Ste20p kinase, which acts upstream of the stress-induced mitogen-activated protein kinase cascade. The encoded protein can phosphorylate myelin basic protein and undergoes autophosphorylation. A caspase-cleaved fragment of the encoded protein has been shown to be capable of phosphorylating histone H2B. The particular phosphorylation catalyzed by this protein has been correlated with apoptosis, and it's possible that this protein induces the chromatin condensation observed in this process.

Recommended Dilutions

IP 0.5µg-4µg antibody for
400µg-600µg extracts of
whole cells

ELISA Recommended starting
concentration is 1 µg/mL.
Please optimize the
concentration based on
your specific assay
requirements.

Immunogen Information

Gene ID

6789

Swiss Prot

Q13043

Immunogen

Synthetic peptide. This information is considered to be commercially sensitive.

Synonyms

KRS2; MST1; YSK3

Contact

☎ | 400-999-6126

✉ | cn.market@abclonal.com.cn

🌐 | www.abclonal.com.cn

Product Information

Source

Rabbit

Isotype

IgG

Purification

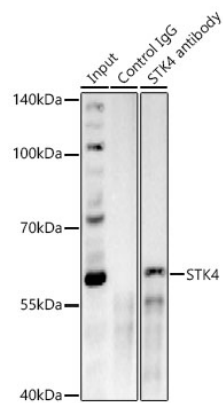
Affinity purification

Storage

Store at -20°C. Avoid freeze / thaw cycles.

Buffer: PBS with 0.05% proclin300, 50% glycerol, pH7.3.

Validation Data



Immunoprecipitation of STK4 from 500 µg extracts of HeLa cells was performed using 2 µg of STK4 Rabbit pAb (A25851). Rabbit IgG isotype control (AC042) was used to precipitate the Control IgG sample. IP samples were eluted with 1X Laemmli Buffer. The Input lane represents 10% of the total input. Western blot analysis of immunoprecipitates was conducted using STK4 Rabbit pAb (A18100) at a dilution of 1:1000.