

# ABflo® 647 Rabbit anti-Mouse Ki67 mAb

Catalog No.: A26240

## Basic Information

### Observed MW

**Calculated MW**  
351kDa

**Category**  
Primary antibody

**Applications**  
FC (intra)

**Cross-Reactivity**  
Mouse

**CloneNo number**  
ARC69121

**Conjugate**  
ABflo® 647. Ex:648nm. Em:664nm.

## Background

Predicted to enable protein C-terminus binding activity. Involved in regulation of chromatin organization. Acts upstream of or within cholangiocyte proliferation; hepatocyte proliferation; and meiotic cell cycle. Located in chromosome; cytoplasm; and nucl

## Recommended Dilutions

**FC (intra)** 5 µl per 10<sup>6</sup> cells in  
100 µl volume

## Immunogen Information

Gene ID	Swiss Prot
17345	E9PVX6

### Immunogen

Recombinant protein (or fragment). This information is considered to be commercially sensitive.

### Synonyms

Ki67; Ki-67; D630048A14Rik

## Contact

☎		400-999-6126
✉		cn.market@abclonal.com.cn
🌐		www.abclonal.com.cn

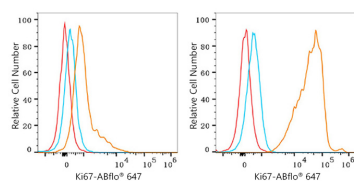
## Product Information

Source	Isotype	Purification
Rabbit	IgG	Affinity purification

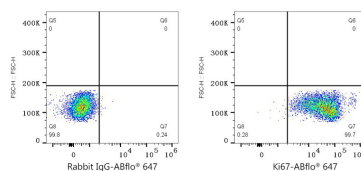
### Storage

Store at 2-8°C. Avoid freeze.  
Buffer: PBS with 0.09% Sodium azide, 0.2% BSA, pH7.3.

## Validation Data



Flow cytometry:  $1 \times 10^6$  C57BL/6 mouse splenocytes (Low Expression, left) and RAW 264.7 cells (right) were intracellularly-stained with ABflo® 647 Rabbit anti-Mouse Ki67 mAb (A26240, 5  $\mu$ l/Test, orange line) or ABflo® 647 Rabbit IgG isotype control (A22070, 5  $\mu$ l/Test, blue line). Non-fluorescently stained cells were used as blank control (red line).



Flow cytometry:  $1 \times 10^6$  RAW 264.7 cells were intracellularly-stained with ABflo® 647 Rabbit IgG isotype control (A22070, 5  $\mu$ l/Test, left) or ABflo® 647 Rabbit anti-Mouse Ki67 mAb (A26240, 5  $\mu$ l/Test, right).