

# Lipocalin-2/NGAL Rabbit PolymAb®

**Catalog No.: A26627PM**

## Basic Information

**Observed MW**

23kDa

**Calculated MW**

23kDa

**Category**

Primary antibody

**Applications**

WB, IHC-P, IF/ICC, ELISA

**Cross-Reactivity**

Human, Mouse

## Background

This gene encodes a protein that belongs to the lipocalin family. Members of this family transport small hydrophobic molecules such as lipids, steroid hormones and retinoids. The protein encoded by this gene is a neutrophil gelatinase-associated lipocalin and plays a role in innate immunity by limiting bacterial growth as a result of sequestering iron-containing siderophores. The presence of this protein in blood and urine is an early biomarker of acute kidney injury. This protein is thought to be involved in multiple cellular processes, including maintenance of skin homeostasis, and suppression of invasiveness and metastasis. Mice lacking this gene are more susceptible to bacterial infection than wild type mice.

## Recommended Dilutions

**WB** 1:1000 - 1:5000**IHC-P** 1:500 - 1:2000**IF/ICC** 1:200 - 1:400

**ELISA** Recommended starting concentration is 1 µg/mL. Please optimize the concentration based on your specific assay requirements.

## Immunogen Information

**Gene ID**

3934/16819

**Swiss Prot**

P80188/P11672

**Immunogen**

Recombinant protein (or fragment). This information is considered to be commercially sensitive.

**Synonyms**

p25; 24p3; MSFI; NGAL; Lipocalin-2/NGAL; AW212229; NRL; Sip24

## Contact

 | 400-999-6126 | [cn.market@abclonal.com.cn](mailto:cn.market@abclonal.com.cn) | [www.abclonal.com.cn](http://www.abclonal.com.cn)

## Product Information

**Source**

Rabbit

**Isotype**

IgG

**Purification**

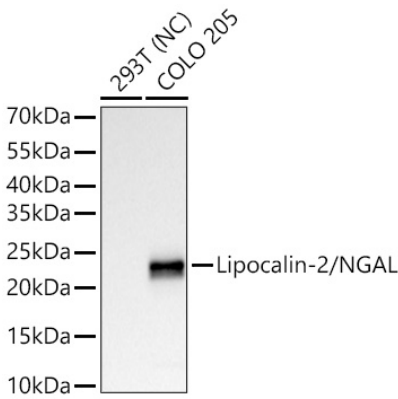
Affinity purification

**Storage**

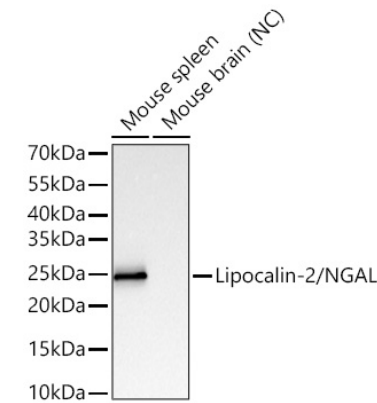
Store at -20°C. Avoid freeze / thaw cycles.

Buffer: PBS with 0.09% Sodium azide, 0.05% BSA, 50% glycerol, pH7.3.

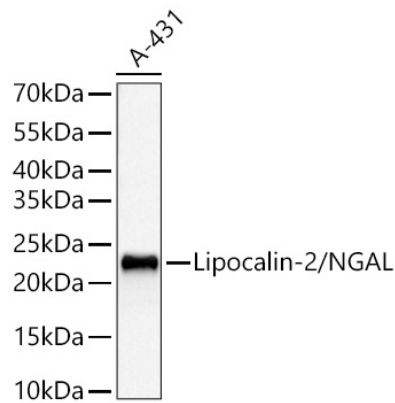
Validation Data



Western blot analysis of various lysates using Lipocalin-2/NGAL Rabbit PolymAb® (A26627PM) at 1:1000 dilution incubated overnight at 4°C.  
Secondary antibody: HRP-conjugated Goat anti-Rabbit IgG (H+L) (AS014) at 1:10000 dilution.  
Lysates/proteins: 25 µg per lane.  
Blocking buffer: 3% nonfat dry milk in TBST.  
Detection: ECL Basic Kit (RM00020).  
Negative control (NC): 293T  
Exposure time: 10s.

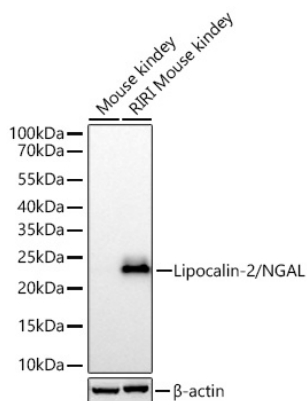


Western blot analysis of various lysates using Lipocalin-2/NGAL Rabbit PolymAb® (A26627PM) at 1:1000 dilution incubated overnight at 4°C.  
Secondary antibody: HRP-conjugated Goat anti-Rabbit IgG (H+L) (AS014) at 1:10000 dilution.  
Lysates/proteins: 25 µg per lane.  
Blocking buffer: 3% nonfat dry milk in TBST.  
Detection: ECL Basic Kit (RM00020).  
Negative control (NC): Mouse brain  
Exposure time: 10s.

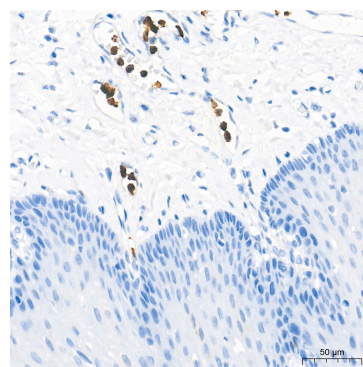
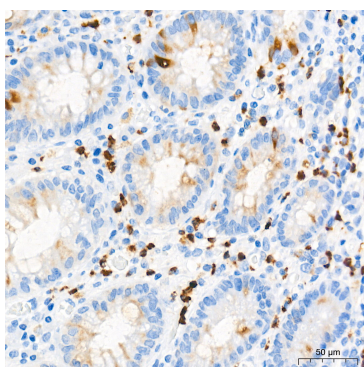
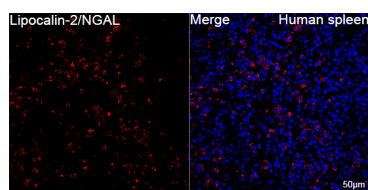


Western blot analysis of lysates from A-431 cells using Lipocalin-2/NGAL Rabbit PolymAb® (A26627PM) at 1:1000 dilution incubated overnight at 4°C.  
Secondary antibody: HRP-conjugated Goat anti-Rabbit IgG (H+L) (AS014) at 1:10000 dilution.  
Lysates/proteins: 25 µg per lane.  
Blocking buffer: 3% nonfat dry milk in TBST.  
Detection: ECL Basic Kit (RM00020).  
Exposure time: 60s.

## Validation Data



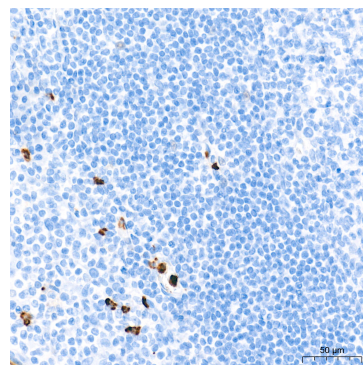
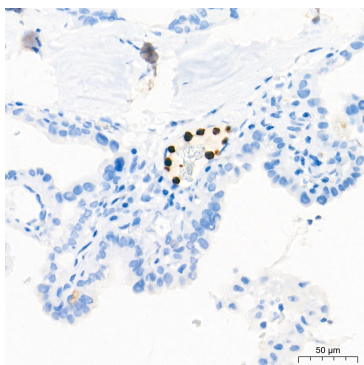
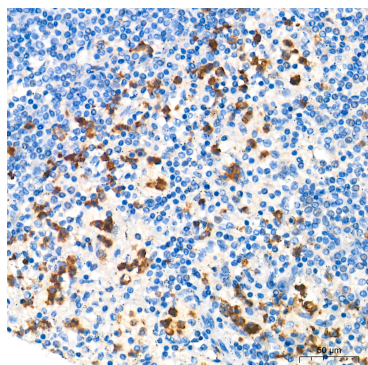
Western blot analysis of various lysates using Lipocalin-2/NGAL Rabbit PolymAb® (A26627PM) at 1:1000 dilution incubated overnight at 4°C. Secondary antibody: HRP-conjugated Goat anti-Rabbit IgG (H+L) (AS014) at 1:10000 dilution. Lysates/proteins: 25 µg per lane. Blocking buffer: 3% nonfat dry milk in TBST. Detection: ECL Basic Kit (RM00020). Exposure time: 20s.



Confocal imaging of paraffin-embedded Human spleen tissue using Lipocalin-2/NGAL Rabbit PolymAb® (A26627PM, dilution 1:200) followed by a further incubation with Cy3 Goat Anti-Rabbit IgG (H+L) (AS007, dilution 1:500) (Red). DAPI was used for nuclear staining (Blue). High pressure antigen retrieval performed with 0.01M Citrate Buffer (pH 6.0) prior to IF staining. Objective: 40x.

Immunohistochemistry analysis of paraffin-embedded Human colon tissue using Lipocalin-2/NGAL Rabbit PolymAb® (A26627PM) at a dilution of 1:1000 (40x lens). High pressure antigen retrieval performed with 0.01M Tris-EDTA Buffer (pH 9.0) prior to IHC staining.

Immunohistochemistry analysis of paraffin-embedded Human esophagus tissue using Lipocalin-2/NGAL Rabbit PolymAb® (A26627PM) at a dilution of 1:1000 (40x lens). High pressure antigen retrieval performed with 0.01M Tris-EDTA Buffer (pH 9.0) prior to IHC staining.



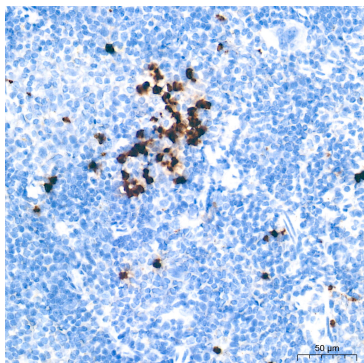
Immunohistochemistry analysis of paraffin-embedded Human spleen tissue using Lipocalin-2/NGAL Rabbit PolymAb® (A26627PM) at a dilution of 1:1000 (40x lens). High pressure antigen retrieval performed with 0.01M Tris-EDTA Buffer (pH 9.0) prior to IHC staining.

Immunohistochemistry analysis of paraffin-embedded Human thyroid cancer tissue using Lipocalin-2/NGAL Rabbit PolymAb® (A26627PM) at a dilution of 1:1000 (40x lens). High pressure antigen retrieval performed with 0.01M Tris-EDTA Buffer (pH 9.0) prior to IHC staining.

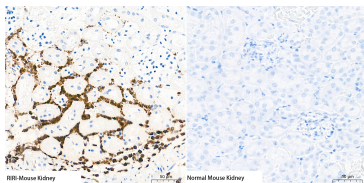
Immunohistochemistry analysis of paraffin-embedded Human tonsil tissue using Lipocalin-2/NGAL Rabbit PolymAb® (A26627PM) at a dilution of 1:1000 (40x lens). High pressure antigen retrieval performed with 0.01M Tris-EDTA Buffer (pH 9.0) prior to IHC staining.

## Validation Data

---



Immunohistochemistry analysis of paraffin-embedded Mouse spleen tissue using Lipocalin-2/NGAL Rabbit PolymAb® (A26627PM) at a dilution of 1:1000 (40x lens). High pressure antigen retrieval performed with 0.01M Tris-EDTA Buffer (pH 9.0) prior to IHC staining.



Immunohistochemistry analysis of paraffin-embedded (RIRI) Mouse kidney tissue using Lipocalin-2/NGAL Rabbit PolymAb® (A26627PM) at a dilution of 1:1000 (40x lens). High pressure antigen retrieval performed with 0.01M Tris-EDTA Buffer (pH 9.0) prior to IHC staining.