

APC Rabbit anti-Human CD5 mAb

Catalog No.: A26829

Basic Information

Observed MW

Calculated MW

55kDa

Category

Primary antibody

Applications

FC

Cross-Reactivity

Human

CloneNo number

ARC53917

Conjugate

APC. Ex:650nm. Em:660nm.

Background

This gene encodes a member of the scavenger receptor cysteine-rich (SRCR) superfamily. Members of this family are secreted or membrane-anchored proteins mainly found in cells associated with the immune system. This protein is a type-I transmembrane glycoprotein found on the surface of thymocytes, T lymphocytes and a subset of B lymphocytes. The encoded protein contains three SRCR domains and may act as a receptor to regulate T-cell proliferation. Alternative splicing results in multiple transcript variants encoding different isoforms.

Recommended Dilutions

FC 5 µl per 10⁶ cells in
100 µl volume

Immunogen Information

Gene ID

921

Swiss Prot

P06127

Immunogen

Recombinant protein (or fragment). This information is considered to be commercially sensitive.

Synonyms

T1; LEU1

Contact

☎ | 400-999-6126

✉ | cn.market@abclonal.com.cn

🌐 | www.abclonal.com.cn

Product Information

Source

Rabbit

Isotype

IgG

Purification

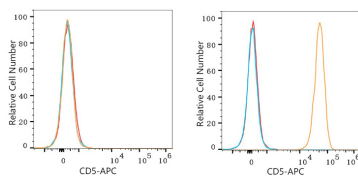
Affinity purification

Storage

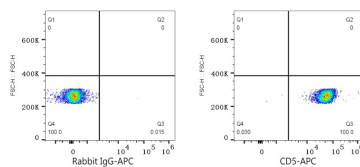
Store at 2-8°C. Avoid freeze.

Buffer: PBS with 0.09% Sodium azide, 0.2% BSA, pH7.3.

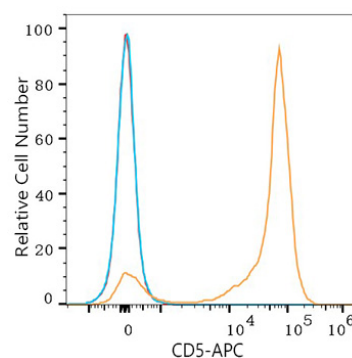
Validation Data



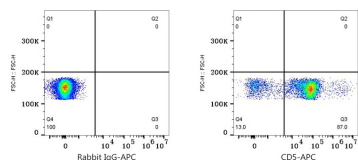
Flow cytometry: 1×10^6 K-562 cells (negative control, left) and MOLT-4 cells (right) were surface-stained with APC Rabbit anti-Human CD5 mAb (A26829, 5 μ l/Test, orange line) or APC Rabbit IgG isotype control (A24173, 5 μ l/Test, blue line). Non-fluorescently stained cells were used as blank control (red line).



Flow cytometry: 1×10^6 MOLT-4 cells were surface-stained with APC Rabbit IgG isotype control (A24173, 5 μ l/Test, left) or APC Rabbit anti-Human CD5 mAb (A26829, 5 μ l/Test, right).



Flow cytometry: 1×10^6 Human PBMC were surface-stained with APC Rabbit anti-Human CD5 mAb (A26829, 5 μ l/Test, orange line) or APC Rabbit IgG isotype control (A24173, 5 μ l/Test, blue line). Non-fluorescently stained cells were used as blank control (red line).



Flow cytometry: 1×10^6 Human PBMC were surface-stained with APC Rabbit IgG isotype control (A24173, 5 μ l/Test, left) or APC Rabbit anti-Human CD5 mAb (A26829, 5 μ l/Test, right). Cells in the Lymphocytes gate were used for analysis.